



## II.

# The Tuscan islands and adjacent mainland coast

The Tuscan Islands dot the sea between Italy and Corsica. They are the mountain peaks of the continent of Tyrrhenia which sank into the sea in the Quarternary Era leaving a chain of islands across the western Mediterranean: the Balearics, Sardinia, Corsica and the Tuscan Islands all belong to this group. The Tuscan archipelago consists of Gorgona, Capraia, Elba, Pianosa, Montecristo, Giglio and Giannutri. With the exception of Pianosa and Giannutri, they are all mountainous islands rising sheer from the sea and there are generally good depths close to the coast. The mainland coast opposite the islands is by contrast mostly marshy land except for several promontories which project from the flat land and look like islands from afar.

The Tuscan archipelago is a popular cruising ground for yachts and in the summer can be crowded. The patchwork of islands between Corsica and the mainland provides conveniently spaced stepping stones for the passage between Corsica and Italy. However you may end up staying longer than you planned, seduced by the charm of these islands. Foreign yachts heading further south often get no further than Elba and use Portoferraio as a base for exploring the Ligurian Coast, Corsica, Sardinia and the adjacent mainland.

### Routes

Yachts hopping down the coast have a pretty straightforward route going N or S with maybe a few excursions into the Tuscan Islands. Some yachts will often choose to cross to Corsica from France and then hop across to the Tuscan Islands and the Italian coast. On the east coast of Corsica either Macinnagio or Bastia are good jumping off points for Capraia or Elba.

All these routes are straightforward and it is really only a matter of picking a weather window to make the hops across. In the summer it will often be lack of wind that is the problem rather than too much.

Porto delle Valle in Santo Stefano

**USEFUL WAYPOINTS**

- ⊕1 1M W of Marina di Carrara  
44°01'·6N 10°01'·1E
- ⊕2 5M W of Secche della Meloria (S) light tower  
43°32'·8N 10°06'·7E
- ⊕3 3M W of Secche di Vada light  
43°19'·2N 10°18'·0E
- ⊕4 1M N of N end of I. Capraia  
43°05'·2N 09°49'·5E
- ⊕5 1M S of S end of Capraia  
42°59'·2N 09°48'·7E
- ⊕6 1M N of Pta Polveraia (Elba/NW corner)  
42°48'·6N 10°06'·6E
- ⊕7 0·5M N of Scoglietto (Elba/Portoferraio approach)  
42°50'·18N 10°19'·7E
- ⊕8 1M S of Pta dei Ripalti (Elba/SE corner)  
42°41'·25N 10°25'·5E
- ⊕9 1M W of I. Palmaiola  
42°51'·9N 10°27'·0E
- ⊕10 1·5M W of Punta Ala  
42°48'·1N 10°42'·3E
- ⊕11 1M W of Talamone  
42°33'·1N 11°07'·0E
- ⊕12 0·5M of Pta Lividonia (Monte Argentario)  
42°27'·2N 11°06'·3E
- ⊕13 0·5M S of Pta di Torre Ciana (Monte Argentario)  
42°21'·0N 11°09'·0E
- ⊕14 1M N of Pta del Fenaio (I. del Giglio)  
42°24'·2N 10°52'·9E
- ⊕15 1M S of Pta del Capel Rosso (I. del Giglio)  
42°18'·2N 10°55'·3E
- ⊕16 1M S of Punta del Capel Rosso (I. di Giannutri)  
42°13'·3N 11°06'·6E
- ⊕17 1M N of Pte del Marchese (I. Pianosa)  
42°39'·0N 10°04'·9E
- ⊕18 1M S of Pta Brigantina (I. Pianosa)  
42°33'·2N 10°05'·5E
- ⊕19 1M W of Scoglio Africa  
42°21'·4N 10°02'·6E
- ⊕20 1M N of I. di Montecristo  
42°22'·0N 10°18'·8E
- ⊕21 1M S of I. di Montecristo  
42°17'·8N 10°18'·8E

**Weather patterns**

The prevailing wind in the summer is from the W-NW and rarely blows at gale force. There will frequently be SE winds around Capraia, Elba and the mainland coast down to Giannutri, and frequent periods of calm. Often there will be a light W or SW wind at night. If a depression passes northwards through the Gulf of Genoa, a SW wind (the libeccio) will blow with considerable force. In the spring and autumn there are frequent local squalls around the islands, usually easily spotted as a ragged black line of cloud, though they do not normally last for long.

**Shoestring cruising in the Tuscan Islands and adjacent coast**

If you are cruising S down from the Ligurian coast there are few anchorages until you get to the Tuscan Islands. Even around the islands and the adjacent coast there are not as many useable anchorages as you might imagine.

**Tuscan Islands**

**Harbours and marinas**

Around the Tuscan Islands *Porto Capraia*, *Marina di Campo* and *Cavo* are reasonably priced though check in advance during high season. Marinas around *Portoferraio* and *Porto Azzuro* on Elba are now very expensive in the high season. *Giglio Marina* is good early and late season.

**Anchorage**

**Capraia** At Porto Capraia there are fore and aft moorings at a reasonable price.

**Elba** Around Elba the best anchorages are along the S coast at Golfo di Campo, Golfo della Lacona and Golfo Stella. You can anchor on the SW side of Portoferraio although there have been problems reported here and yachts have been moved along. You can also anchor off in the bay at Porto Azzurro clear of the moorings.

**Giglio** Around Giglio there are anchorages on the W and E coast depending on wind and weather. Cala Canelle and Cala Capazzollo on the E side are usually good in settled weather.

**Giannutri** Around Giannutri anchoring is much restricted by the marine reserves and Cala Schiavone is really the only practical place.

**Mainland Coast**

**Harbours and marinas**

Marinas in this patch of Italy can be very expensive in high season and even mid-season. The following marinas and harbours/catwalks are more reasonably priced than others in the vicinity, though you are better off here in low or mid-season compared to high season prices.

**Marina di Carrara** is usually welcoming and not too expensive. The town ashore is also just great.

**Bocca d'Arno** further down the coast has catwalks off some of the yards you can go alongside at a reasonable price. You will not be able to get in or out of the river with strong onshore winds.

**Livorno** Try the YC pontoon in *Porto Mediceo Castiglione della Pescaia* although you need to be careful of the bar at the entrance.

**Anchorage**

Off the S side of Livorno (just off Nazzaro Saura). You may be asked to move.

**Torre del Romito** In settled weather anchor off the small harbour or just E.

**Castiglione** Anchor on the N or S side of the point depending on wind and sea.

**Porto Baratti** The S end of the bay is best clear of the moorings.

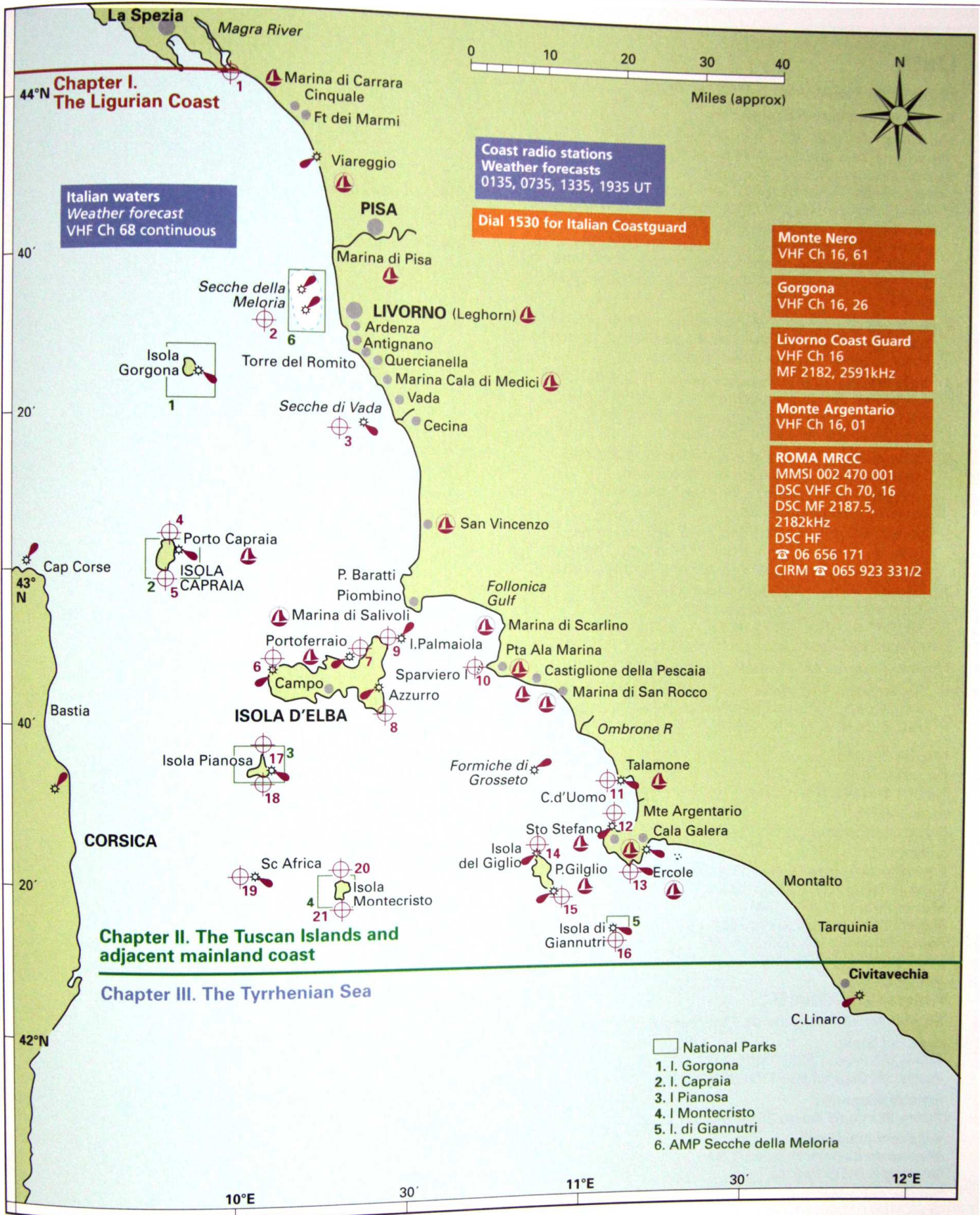
**Punta Ala** Anchor on the side of the point with northerlies.

**Forte Rochetta** Anchor on the S side with northerlies.

**Cala di Forno** Reasonable shelter from southerlies.

**Talamone** Reasonable shelter from northerlies and light westerlies.

**Monte Argentario** There are a number of useful anchorages around the promontory. Pozzarello just E of Santo Stefano has adequate shelter in southerlies. Cala Grande, Cala del Bove and L'Isolotto provide some shelter from southerlies or northerlies. Pick the most useful as they are all close together. Off Marina di Cala Galera you can anchor off the N breakwater and get some shelter from westerlies.



TUSCAN ISLANDS AND ADJACENT MAINLAND COAST

## Data

### PROHIBITED AREAS AND NATIONAL PARKS

#### Tuscan Archipelago National Park

The Tuscan Archipelago National Park authority regulates access and activities on part or all of all the islands, including Elba. Only restrictions applying to yachtsmen are listed below.

1. **Isola Gorgona** It is prohibited to approach within two miles or to land anywhere on the island without permission from the authorities. A national park with maritime areas has been created around the island and the only access to Cala dello Scalo is on a course of due W.
2. **Isola Capraia** A national park with maritime areas has been created around the island and the only access to Porto Capraia is on a course of due W.
3. **Isola Pianosa** A former prison island, it was declared a National Park with maritime areas in 1997. All navigation, anchoring, fishing and diving is prohibited within 1M of the island.
4. **Isola Montecristo** A national park with maritime areas has been created around the island. Navigation, anchoring, fishing and diving is prohibited within 1,000m.
5. **Isola di Giannutri** A national park with maritime areas has been created around the island. There are access channels to Cala Maestra and Golfo Spalmatoi.

#### Tuscan Archipelago National Park

Via Guerrazzi 1, 57037 Portoferraio

☎ 0565 919 411 Fax 0565 919 428

Email parco@islepark.it www.islepark.it

#### Marine Reserves Area Marina Protetta (AMP)

6. **Secche della Meloria** A new reserve around the reef off Livorno. The most sensitive parts of the reef are within Zone A of the reserve.

### MAJOR LIGHTS

#### Isola Gorgona

Punta Paratella (Maestra) LFI.10s105m9M

#### Isola Capraia

Punta del Ferraione LFI.6s30m16M

#### Isola d'Elba

Portoferraio, Forte Stella FI(3)14s63m16M

Capo Focardo FI(3)15s32m16M

Monte Poro FI.5s160m16M

Marina de Campo FI.3s34m10M

Punta Polveraia LFI(3)15s52m16M

I. Palmaiola FI.5s105m10M

#### Isola Pianosa

Pianosa FI(2)10s42m16M

Scoglio Africa. Formiche de Montecristo FI.5s19m12M

#### Isola del Giglio

Punta del Fenaio FI(3)15s39m16M

Punta del Capel Rosso FI(4)30s90m23M

#### Isola di Giannutri

Punta del Capel Rosso FI.5s61m13M

#### Adjacent mainland

Marina de Carrara FI.3s22m17M

Viareggio FI.5s30m22M

#### Secche della Meloria

N end: FI(2)10s18m10M

S end: Q(6)+LFI.15s18m12M

Livorno FI(4)20s52m24M

Secche di Vada FI(2)10s18m12M

Porto Baratti FI.3s75m9M

Piombino (La Rocchetta) FI(3)15s18m11M

Punta Ala Marina FI.2s12m7M

North Rock (Formiche di Grosseto) FI.6s23m11M

Talamone FI(2)10s30m15M

Punta Lividonia FI.5s47m16M

Forte La Rocca LFI.WR.7s91m16/13M

Marina Cala Galera Iso.WR.2s10m10/7M

## Quick reference guide

	Shelter	Mooring	Fuel	Water	Eating out	Provisions	Plan	Charge band
<b>Isola Capraia</b>								
Porto Capraia	A	A	A	A	C	C	•	5
<b>Isola d'Elba</b>								
Portoferraio	A	A	A	A	A	A	•	6
Esaom Cesa	A	A	O	A	C	C	•	5
Edilnautica	A	A	B	A	C	C	•	5
Magazzini	C	AC	O	B	C	C	•	
Cala Bagnaia	C	C	O	O	O	C	•	
Nisporto/Nisportino	C	C	O	O	O	C	•	
Capo Vita anchorage	O	C	O	O	O	O	•	
Cavo	B	A	A	A	C	C	•	
Rio Marina	C	A	B	A	C	C	•	
Senno d'Ortano	C	C	O	O	C	C	•	
Porto Azzurro	A	A	A	A	A	A	•	5/6
Cala del' Innamorata	O	C	O	O	C	C	•	
Morcone	O	C	O	O	O	C	•	
Golfo Stella	C	AC	O	O	C	C	•	
Golfo della Lacona	B	C	O	O	C	C	•	
Marina di Campo	B	AC	A	A	B	A	•	4
Cavoli	C	C	O	O	C	C	•	
Barbatoia	C	C	O	O	C	C	•	
Marciana Marina	B	A	A	A	B	A	•	4
Procchio	C	C	O	O	C	C	•	
<b>Isola del Giglio</b>								
Giglio Porto	A	A	B	A	B	B	•	4
Cala Canelle	C	C	O	O	C	O	•	
Cala Capazzollo	C	C	O	O	O	O	•	
Seno Campese	C	C	O	O	C	C	•	
<b>Isola di Giannutri</b>								
Cala Spalmatoi	B	C	O	O	O	C	•	
Cala Maestra	O	C	O	O	O	C	•	
<b>Mainland coast</b>								
Marina di Carrara	A	A	A	A	B	B	•	2/3
Cinquale	A	A	B	A	O	O	•	
Forte dei Marmi	O	BC	B	O	B	B	•	
Viareggio	A	A	A	A	A	A	•	6
Marina di Pisa	A	AB	A	A	B	B	•	2/3
Livorno	A	A	A	A	A	A	•	3/4
Nazario Saura	B	A	A	A	C	C	•	
Ardenza	C	A	O	O	C	C	•	
Antignano	O	A	B	A	B	B	•	
Torre del Romito	O	C	O	O	O	O	•	
Quercianella	C	A	O	O	C	C	•	
Chioma	O	A	O	O	O	O	•	
Rossana	C	AC	O	O	O	O	•	
Castiglioncello	C	C	B	B	B	B	•	
Marina Cala di Medici	A	A	A	A	B	A	•	6
Vada	O	AB	B	O	O	O	•	
Cecina Mare	A	A	A	O	C	•	2	
San Vincenzo	A	A	B	A	B	B	•	6+
Porto Baratti	C	C	O	O	O	C	•	
Marina di Salivoli	A	A	A	A	C	C	•	6
Piombino	B	A	B	A	C	C	•	

	Shelter	Mooring	Fuel	Water	Eating out	Provisions	Plan	Charge band
Marina di Scarlino	A	A	A	A	C	C	•	6
Punta Ala Marina	A	A	A	A	C	C	•	6+
Castiglione della Pescaia	A	AB	A	A	A	A	•	2/3
Marina di San Rocco	A	A	A	A	C	C	•	6
Cala Forno	C	C	O	O	O	O	•	
Talamone	B	A	A	A	B	B	•	4/5
Santo Stefano	B	A	A	A	A	A	•	6
Porto Ercole	B	A	A	A	B	B	•	5/6
Cala Galera Marina	A	A	A	A	C	C	•	6+

## The Tuscan Islands

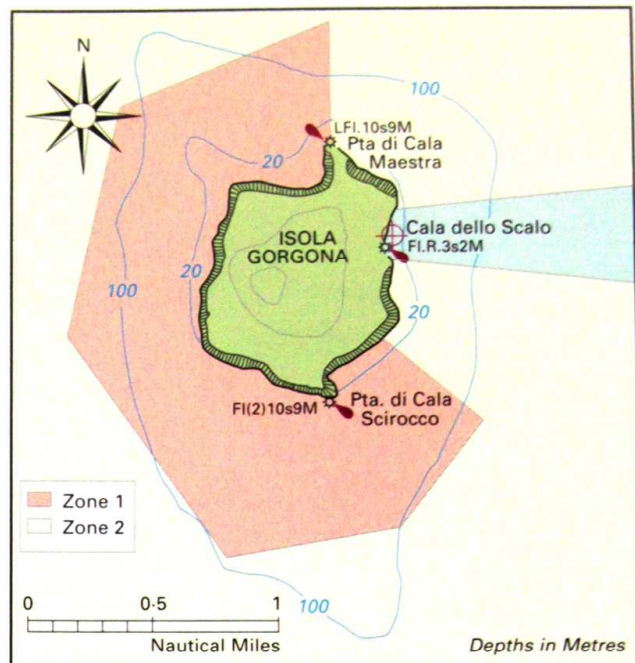
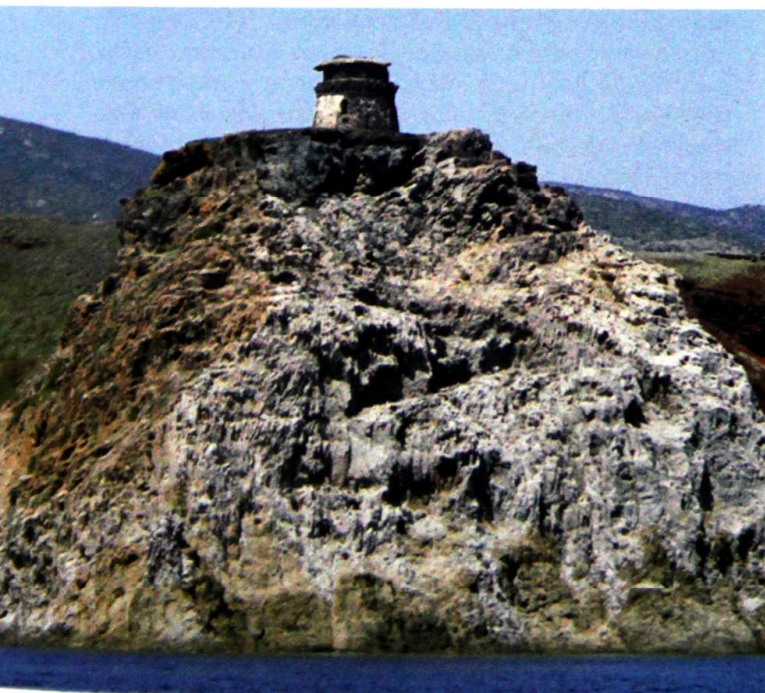
### Isola Gorgona

The northernmost island of the group, it lies about 18 miles WSW of Livorno. It is hilly (255m/837ft high at Punta Gorgona) with a small settlement and minuscule harbour on the E side of the island at Cala dello Scalo. The island is a National Park and landing is prohibited except at Cala dello Scalo.

### Isola Capraia

The northwesternmost island of the group situated approximately 16 miles E of Cap Corse, the northernmost cape of Corsica. It is often used as a stepping stone for yachts en route from Corsica to Elba. It is a mountainous island reaching 447m (1,467ft) at its northern end at Monte Arpagna. It is

Pta Zenobito (Capraia) looking NE. Note conspicuous tower



ISOLA GORGONA  $\oplus$  43°25'·7N 09°54'·6E

### Isola Gorgona National Park

Part of the Tuscan Archipelago National Park since 1996, and a former penal colony, the island's waters are now a marine reserve.

#### Zone 1

Access, navigation, short- and long-time stays, anchoring, any kind of fishing and diving prohibited.

#### Zone 2

Extends up to 3M from the coast. Commercial, sport and underwater fishing prohibited. Access only via the channel to Cala dello Scalo. Anchoring and diving are regulated.

Tuscan Archipelago National Park  
 ☎ 0565 919 411 Fax 0565 919 428  
 Email [parco@islepark.it](mailto:parco@islepark.it)  
[www.islepark.it](http://www.islepark.it)

easily identified when sailing from Corsica. The island is steep-to and everywhere rocky, covered with maquis, and little cultivated except for the terraced slopes on the coast.

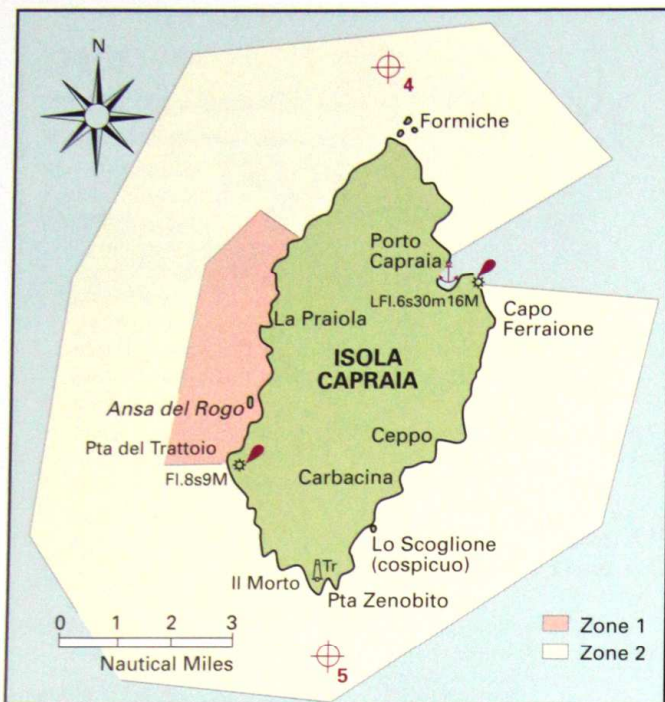
The island was at one time a prison island and landing was prohibited on parts of the island. The prison buildings remain and can be visited.

### PORTO CAPRAIA

#### Approach

Conspicuous Capo Ferraione (Ferrajone) lighthouse, a white square tower and the fort on Capo Ferraione are conspicuous. From the S and E the harbour and village will not be seen until you have opened the bay. Once into the bay the light tower at the entrance and the harbour breakwater are easily identified.

By night Use the light on Capo Ferraione LFI.6s30m16M.



ISOLA CAPRAIA

- ⊕4 1M N of N end of I. Capraia 43°05'·2N 09°49'·5E
- ⊕5 1M S of S end of Capraia 42°59'·2N 09°48'·7E

### Isola Capraia National Park

Part of the Tuscan Archipelago National Park since 1992, the island and its waters are now also a marine reserve.

#### Zone 1

Covers the area from Punta della Manza to Punta del Trattoio.

Access, navigation, short- and long-time stays, anchoring, all types of fishing and diving prohibited.

#### Zone 2

Extends up to 3M from the coast. Commercial, sport and underwater fishing prohibited.

Only access is via channel to Porto Capraia. Anchoring and diving are regulated.

☎ 0565 919 411 Fax 0565 919 428

Email [parco@islepark.it](mailto:parco@islepark.it)

[www.islepark.it](http://www.islepark.it)

### Mooring

**Berth** Go stern or bows-to where possible. Laid moorings at most berths. The bottom is sand and silt and not everywhere good holding. In the summer the harbour is very crowded and you may have to pick up a mooring outside the harbour.

Even early in the season it can be busy with Italian yachts escaping the mainland for the weekend.

**Shelter** Good shelter inside although there are gusts with strong W-NW winds and a bothersome surge with strong NE winds. Strong winds in the Ligurian Sea to the north can cause a large swell which makes a night on the moorings uncomfortable.

**Authorities** Port police and customs. Harbourmaster. Charge band 5.

**Anchorage** In settled weather a yacht can anchor off outside the harbour, beyond the moorings. Anchor



Porto Capraia looking east John Clift

in 8–10m in the bight on the S of the bay on sand and weed, good holding once through the weed. It can be fairly roly in here and it may pay to anchor fore and aft with the bows into the swell.

### Facilities

**Services** Water and electricity on the quay (the conduit runs along the quay at water level). Water may be rationed in the summer.

**Fuel** On the quay though it can be difficult to get in the summer.

**Provisions** Most provisions can be found though the village is much dependent on supplies brought in by ferry.

**Eating out** Restaurants and bars.

**Other** Ferry to the mainland. Bank. ATM.

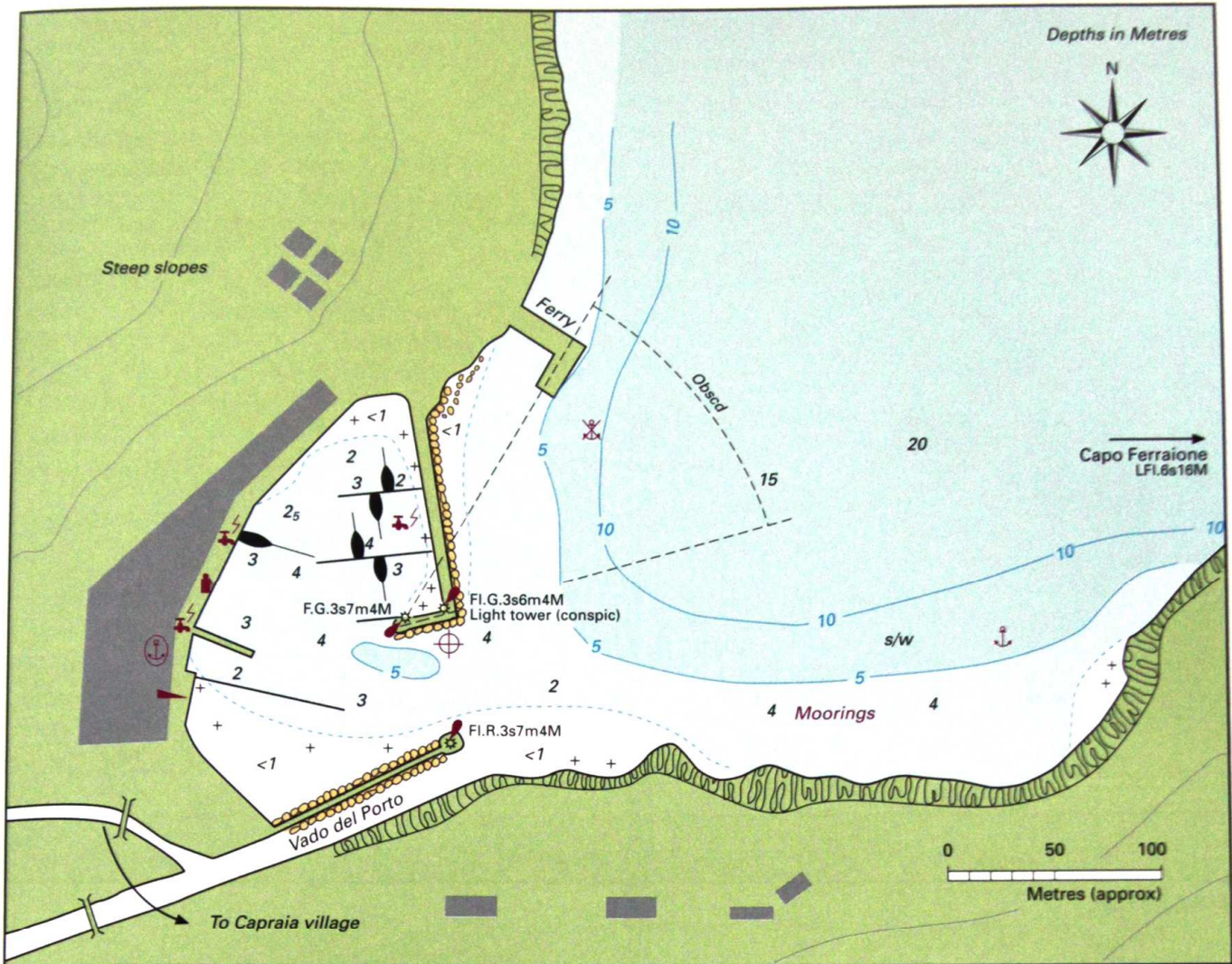
### General

Capraia is known to have been settled in Roman times and on the outskirts of the village above the harbour there are the ruins of a large Roman villa. Later it was settled by monks who over time slipped into what Pope Gregory the Great called 'unorthodoxy and loose behaviour'. He sent an armed force to put them back on the orthodox path. Early on in his life Boswell inadvertently spent some time here. In 1765 when the ship *Boswell* was travelling in from Corsica to Genoa encountered a northerly gale, it put into Capraia and Boswell went ashore. He stayed with the Franciscan friars and wrote a detailed description of the island.

Like most of the Tuscan Islands, the island was ravaged for several centuries by pirates. Nelson captured it for a short time but did not retain it for long. Today, the islanders enjoy a modest income from a little tourism. It is possible to take a tour of the old prison buildings from Porto Capraia.

### Anchorage around Capraia

Around the southern end of the W and E coasts are a number of anchorages that can be explored in settled weather. The authorities allow access to the southern end of the island, but not to the northern end.

**PORTO CAPRAIA**

⊕43°03'1N 09°50'35E

**Note** All these anchorages are in the Zone 2 area around Isola Capraia. This means navigation is permitted and permission to anchor can be obtained, or play it by ear and in the summer if the locals are anchoring do likewise. It is prohibited to fish in the area.

The two anchorages at Anse del Rogo and La Praiola described in earlier editions are in the Zone 1 area where navigation and anchoring are prohibited.

**Ansa Ceppo**

A bay under Pta Civitata open to the S and east. Anchor in 5–8m on sand.

**Carbacina**

A cove just SE of Ceppo. Open S and east. Anchor in 10–14m.

**Lo Scoglione**

A cove immediately S of Carbacina named after the rock on its S side, Lo Scoglione. Anchor in 9–20m: the bottom comes up quickly.

**Il Morto**

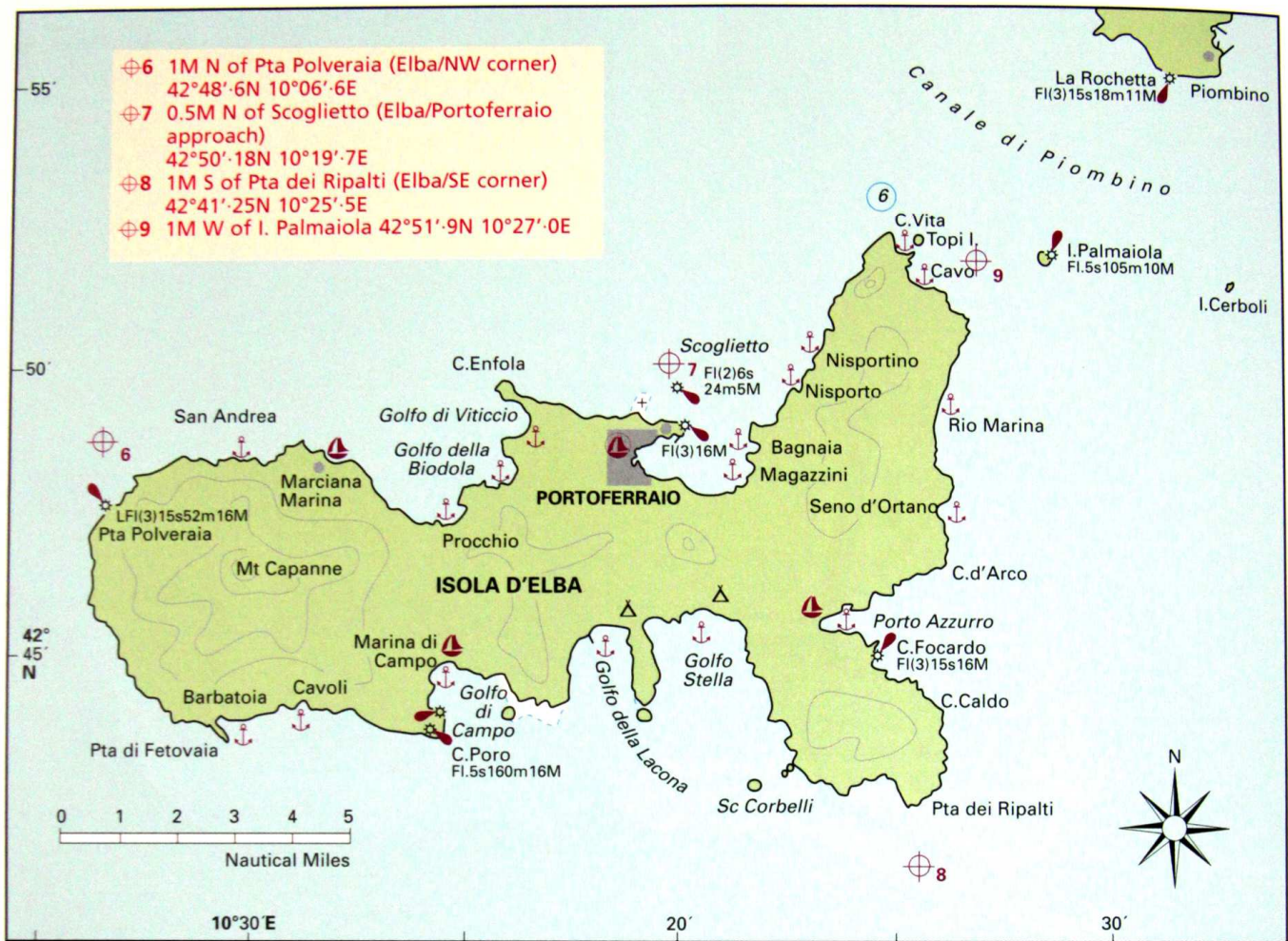
A bay on the W side of Pta Zenobito. The tower on Pta Zenobito is conspicuous if you are coming from the W or east. Open S–SW. Anchor in 10–15m on sand and rock.

**Isola d'Elba****Local magnetic anomalies**

Are reported to be frequently encountered off the coasts of Elba, especially off the NE coast. These are no doubt caused by the substantial iron deposits around the island.

Well known as the subject of the Napoleonic palindrome, 'Able was I ere I saw Elba', the Admiralty *Pilot* describes Elba as 'the largest, richest and most beautiful island of the Archipelago Toscano', and it is difficult to improve on the description. It is everywhere mountainous with the highest part in the W of the island culminating in Monte Capanne (1,019m/3,343ft). Its coast is much indented and there are numerous attractive harbours and anchorages. The slopes are extensively terraced and the island is always green even in the middle of

## II. The Tuscan islands and adjacent mainland coast



### ISOLA D'ELBA

summer. Palms, eucalyptus, cedars and pine grow everywhere and olives and vines are cultivated. The local Elban DOC wine, both Elba Bianco and Elba Rosso is excellent, although it can be hard to get hold of.

In ancient times Elba was important for the easily obtained iron ore on the east coast. As early as the 6th century BC the Etruscans were open-cast mining at Capo Calamita and between Rio and Cavo. The last mine on the E coast only closed in 1984. In the

Scoglietto and mini-lighthouse in the approaches to Portoferraio



middle ages Elba was preyed upon by pirates, who operated fleets as large as any small duchy. In May 1564 a pirate fleet of 42 sail was sighted off Elba. In the 17th and 18th centuries the fleet anchorage of Portoferraio was coveted by France, Spain, Italy and England. Nelson described it as 'for its size the most complete harbour in the world'.

At the end of the 18th-century England occupied Elba for two years and in 1814 the exiled Napoleon arrived. With him came a number of soldiers, 100 grenadiers and light infantry and 600 others including Polish lancers, and a 'navy', the brig *Inconstant*. His principality included Pianosa and he sailed around Elba and across to Pianosa, constructed roads and modernised Portoferraio, all the time no doubt brooding over how he was to get back to France. On 26 February 1815, he embarked on the *Inconstant* and, evading the naval patrols, sailed to France. You can visit Napoleon's house, the Villa dei Mulini in Portoferraio, where he lived a rather spartan life, almost as if he never expected to be long in Elba. The villa contains an Egyptian room with scenes from the Egyptian campaign and a handwritten inscription by Napoleon: 'Napoleon is happy everywhere.' His country house was three miles away in San Martino. Elba became part of united Italy in 1862.



**PORTOFERRAIO**

BA 131  
Italian 72

**Approach**

Straightforward by day and night.

*Conspicuous* Scoglietto Rock and the small stone lighthouse on it is easily identified. The walls of the citadel and the lighthouse on Forte Stella are conspicuous. Once into Rada di Portoferraio the yacht harbour is easily located.

*By night* Unless familiar with the approach a yacht should keep to seaward of Scoglietto at night.

VHF Ch 11, 16 for port authorities. Ch 12 for pilots. Ch 09 for Darsena Medicea.

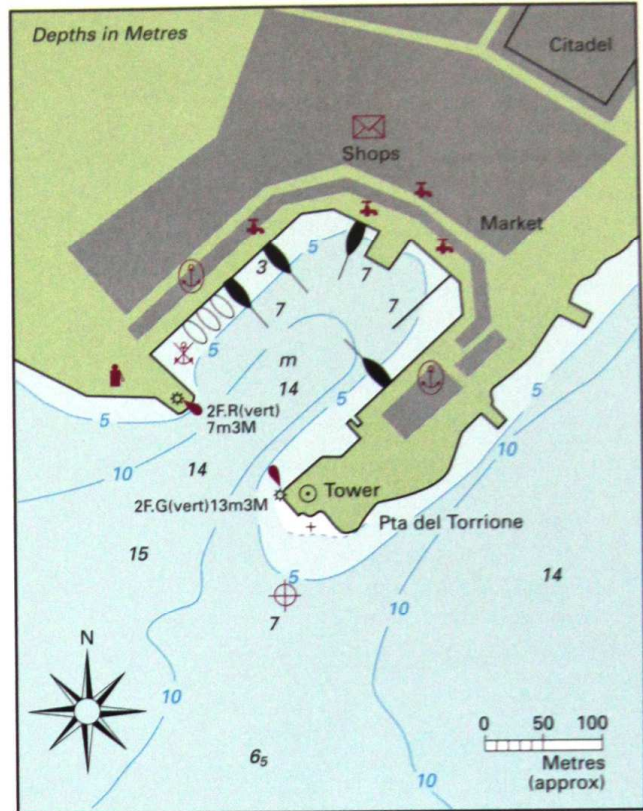
**Dangers**

1. By day a yacht can pass inside Scoglietto with due caution. Secca di Capo Bianco is once again marked with a N cardinal beacon, lit Q.3M.
2. A yacht should give way to the numerous ferries entering and leaving the harbour.
3. With strong southerlies there are gusts off the high land into Rada di Portoferraio.

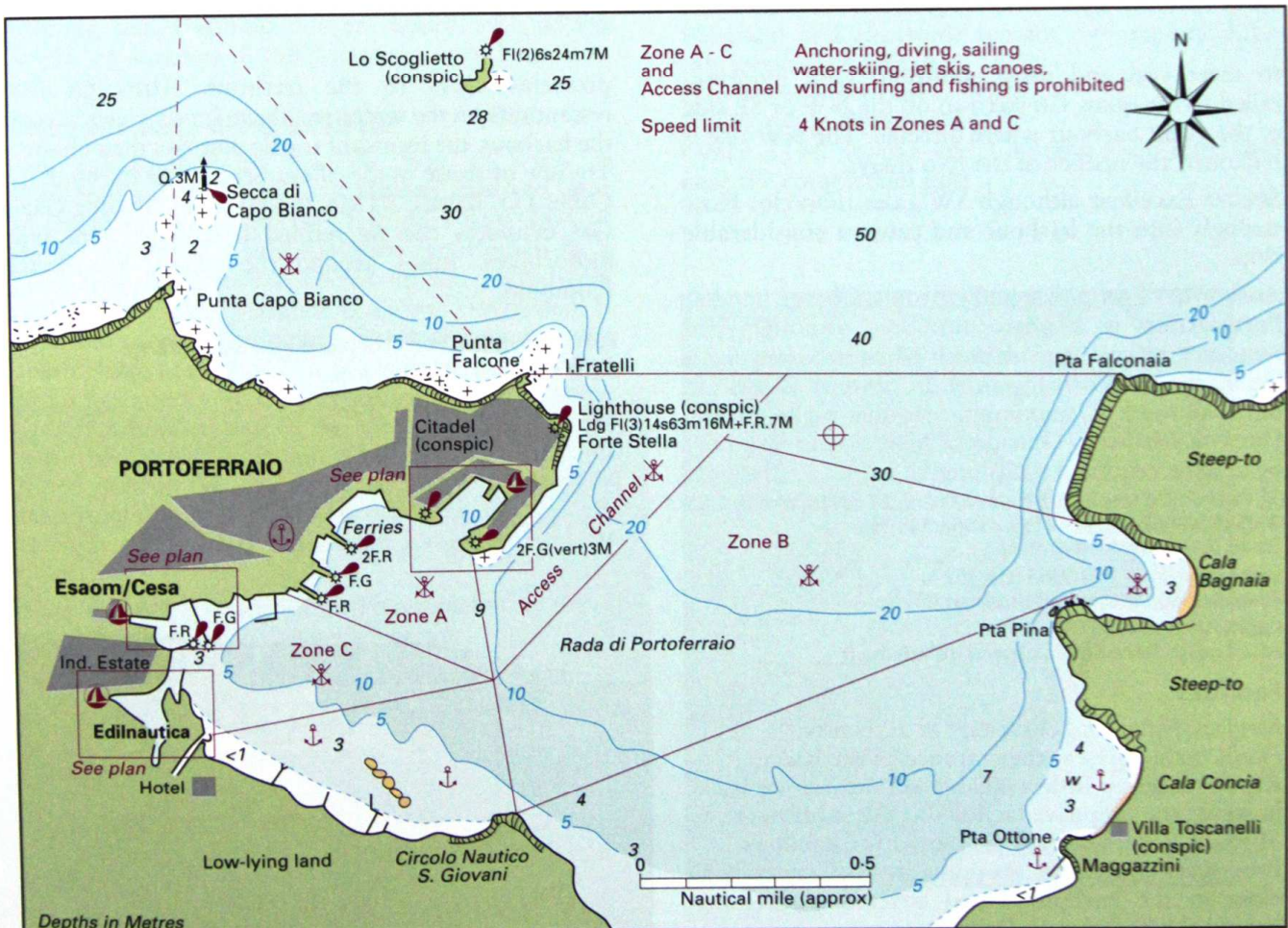
**Mooring**

Data 150 berths. 15 visitors' berths. Max LOA 50m. Depths 3-10m.

Berth Call ahead for a berth. Port staff will come out



**PORTOFERRAIO**  
⊕42°48'·6N 10°19'·8E



**PORTOFERRAIO - APPROACHES**  
⊕42°48'·9N 10°20'·75E



Portoferraio looking SW

to meet you and assist mooring. Laid moorings tailed to the quay. Go stern-to on the NW or SE side of the yacht harbour where directed. The NW side is reckoned the noisier of the two quays.

**Shelter** Excellent although SW gales (*libeccio*) blow strongly into the harbour and cause a considerable slop.

**Authorities** Port police and customs. Charge band 6. Portoferraio is a *porto turistico*, although you wouldn't believe it sometimes when accosted for a fee by the local *ormeggiatori*. In summer yachts are only allowed a maximum of one night in the Darsena Medicea. Outside of high season you may be able to negotiate a bit longer.

✉ Cosimo De' Medici Srl, Cala Mazzini, 37 Portoferraio, Elba  
☎ 0565 944 024 / 914 121 Fax 0565 945 355

Email [cosimomedici@virgilio.it](mailto:cosimomedici@virgilio.it)

Ormeggiatori ☎ / Fax 0565 914 352

Email [ormeggiatorielba@tiscalinet.it](mailto:ormeggiatorielba@tiscalinet.it)

Capitaneria ☎ 0565 914 000

Email [porto.ferraio@capitaneria.isoladelba.it](mailto:porto.ferraio@capitaneria.isoladelba.it)

### Facilities

**Services** Water and electricity at all berths.

**Fuel** On the quay at the entrance to the basin.

**Repairs** There is little available at Portoferraio itself, however the extensive facilities at the yards in the W of Rada di Portoferraio are close by. Chandlers.

**Provisions** Excellent shopping for all provisions close to the harbour. Good covered market just behind the harbour on Fridays.

**Eating out** Excellent restaurants, trattorias and

pizzerias close to the harbour. Although the restaurants on the waterfront have lovely views across the harbour, the incessant traffic destroys their charm. Try one of those in the alleys behind the harbour.

**Other PO.** Banks. ATMs. Italgaz and Camping Gaz. Gas cylinders can be refilled here. Hire cars and motorbikes. Buses around the island. Ferries to Piombino.

Portoferraio Old Port looking N into the entrance  
John Clift





Punta Falcone looking south

## General

Few people fail to fall in love with Portoferraio. Behind the harbour the 18th-century buildings in shades of cream and ochre are tucked under the craggy 16th-century citadel, built originally by Cosmino I, Duke of Florence. The warrens of alleys and staircases are lined with dwellings, shops and restaurants and occasionally lead to unexpected views of the sea behind. You should climb to the citadel walls at least once to watch the sunset and the sea below turning liquid red and sepia as it washes over the rocks and reefs. Even the grubby ferries from Piombino fit into the picture in the half-light at dusk. Without doubt Portoferraio is at its best in the spring or autumn when there are fewer tourists, but it should not be missed even at the height of summer. I can't imagine why Napoleon ever left.

## West side Rada di Portoferraio

You can anchor on the SW side of Rada di Portoferraio clear of the ferry turning area and clear of the fairway into the two harbours here. East of the hotel on the S side has been reported to be a good spot. The bottom comes up fairly gradually and you can usually anchor in 2–5m. The bottom is mud and excellent holding. It is not always the most comfortable at anchor. If it blows from the north or east a fair amount of chop is pushed into the western corner. Added to that is the wash from the ferries and other craft coming and going from Portoferraio. If you need to get into town the best thing to do is take your dinghy across as it is a long dreary walk through some pretty depressing industrial suburbs otherwise.

**Note** Yachts left at anchor in the no-anchoring zones may be moved, at the owner's expense.

## ESAOM CESA

### Approach

This marina lies immediately W of the commercial port in the NW corner of Rada di Portoferraio.

**Conspicuous** A large concrete hangar behind the marina is conspicuous. The entrance is difficult to pick out until you are close to it.

VHF Ch 09 (0600–2200).

## Mooring

**Data** 150 berths. 20 visitors' berths. Max LOA 40m. Depths 2.5–5m.

**Berth** Where directed. There are finger pontoons or laid moorings tailed to the quay, or mooring buoys off the quay for visiting yachts.

**Shelter** Good all-round shelter.

**Authorities** Port captain and marina staff. Charge band 5.

Marina ☎ 0565 919 311

Cantiere Esaom Cesa ☎ 0565 919 273 / 919 311

Fax 0565 917 397

Email marina@esaom.it

www.esaom.it

**Note** Immediately S of the ferry quays, NE of Esaom Cesa, is another basin used primarily as a charter yacht base. At weekends it is busy, but during the week visiting yachts may find a berth. It is less crowded than in Portoferraio and offers better shelter from the afternoon sea breeze. Water and electricity on the quay. No facilities. Supermarket nearby. A charge is made.

## Facilities

**Services** Water and electricity at or near every berth.

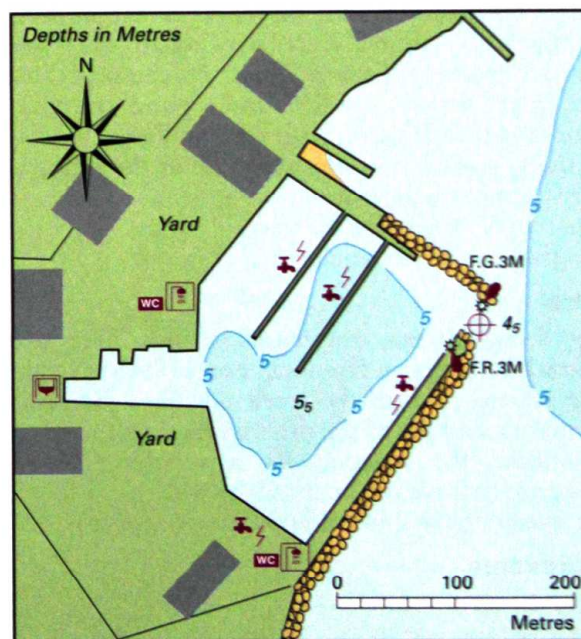
**Fuel** In Portoferraio basin.

**Repairs** 250 and 50-ton travel-hoist. Open and covered storage ashore. Mechanical and engineering repairs. GRP and wood repairs. Some fine wood construction and reparation carried out here. Electrical and electronic repairs. Sail repairs. Life-raft servicing. Chandlers.

**Provisions** Supermarket nearby.

**Eating out** In Portoferraio.

**Other** ATM. Italgaz and Camping Gaz. Hire cars near the commercial port.



ESAOM CESA

☉42°48'5N 10°19'07E

**General**

You wouldn't come here for the surroundings which, although pleasant enough in the marina itself, are pure industrial just outside the gates. Rather this is somewhere to have work done on the boat or a secure base port for exploring Elba. The yard, Cantiere Esaom Cesa, carries out high quality work on yachts and is often refitting old classics.

**EDILNAUTICA MARINA**

**Approach**

This marina lies immediately S of Esaom Cesa and is part of the same group. Care is needed in the approaches as there are shallows off the coast immediately S of the entrance. Proceed parallel to the outer breakwater of Esaom Cesa through the somewhat indistinct entrance. There is a sign on the S side of the entrance welcoming you to Edilnautica Marina.

VHF Ch 09.

**Mooring**

*Data* 100 berths. Max LOA 15m. Depths 2–4m.  
*Berth* Where directed. There are finger pontoons or laid moorings tailed to the quay.  
*Shelter* Excellent all-round shelter.

*Authorities* Port captain and staff. Charge band 5.  
 ☎ 0565 919 309 / 311

*Anchorage* Anchor off outside the moorings in 4–6m on sand, good holding.

**Facilities**

*Services* Water and electricity at or near every berth. The water is reported to be non-potable. Showers and toilets.  
*Fuel* In Portoferraio or large amounts can be delivered by tanker.  
*Repairs* Travel-hoist and slipways. A large hard standing area ashore. Extensive repair facilities which are part of Esaom Cesa. Mechanical and engineering repairs. GRP and wood repairs. Electrical and electronic repairs. Chandlers.  
*Provisions* Some provisions available at the marina. Better shopping in Portoferraio.  
*Eating out* A canteen in the yard.  
*Other* Italgaz and Camping Gaz.

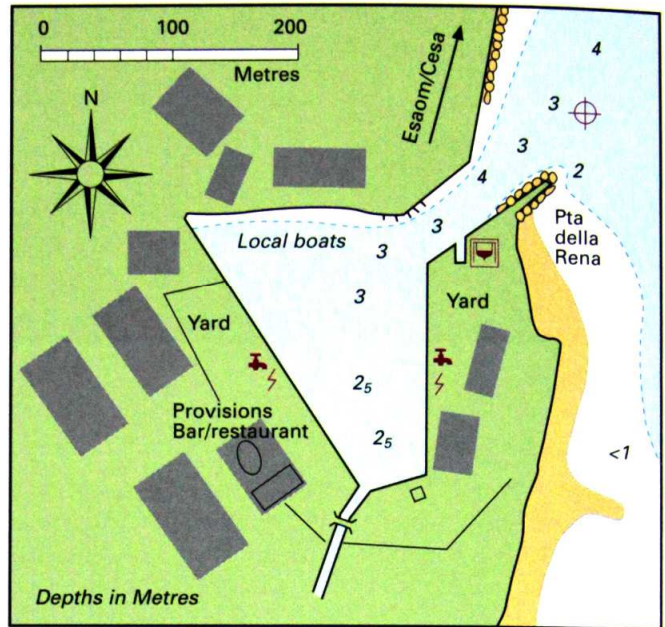
**General**

As at Esaom Cesa, the surroundings here are industrial. However a few local boats on the N side of the marina and up the creek on the S side add some colour and life to the otherwise grimy factories surrounding the marina. As a secure base or somewhere to leave the boat for the winter it is ideal, but it doesn't have a lot of appeal as a spot to visit.

**San Giovanni**

⊕ 42°48'·2N 10°19'·45E

On the S side of Rada di Portoferraio, almost immediately opposite Portoferraio basin, a rough



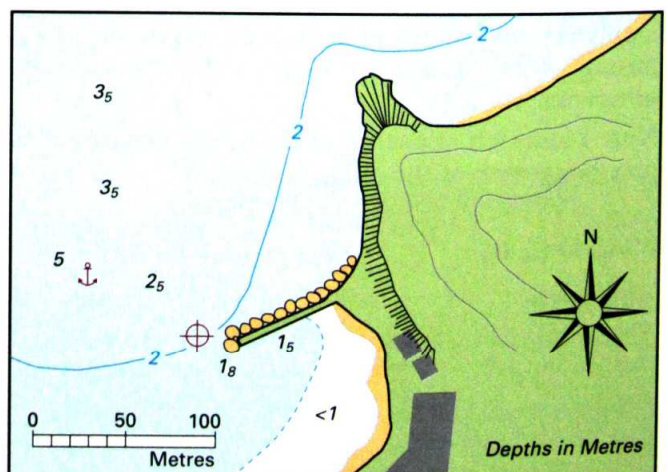
**EDILNAUTICA MARINA**  
 ⊕ 42°48'·46N 10°18'·98E

mole shelters a small harbour for local yachts. Although there are 2m depths in the entrance, these quickly shallow up to 1–1.5m off the catwalk. The depths in here are irregular and caution is needed. Local craft are kept on laid moorings under the mole with some craft berthed stern-to the catwalk which belongs to a local *circolo nautico*.

If you can get in here or even anchor off outside, the small village ashore has a lot of charm. Most provisions can be found and there are several restaurants ashore.

**Magazzini**

Under Punta Ottone in the SE corner of Rada di Portoferraio. The Villa Toscanelli immediately NE stands out well. A short mole shelters the small harbour which is very shallow. Although there are depths of 2m off the end of the mole, most of the harbour is 1m or less deep. The bottom is covered in weed and is poor holding. In calm weather anchor off the beach in 2–4m. Ashore restaurants open in the summer.



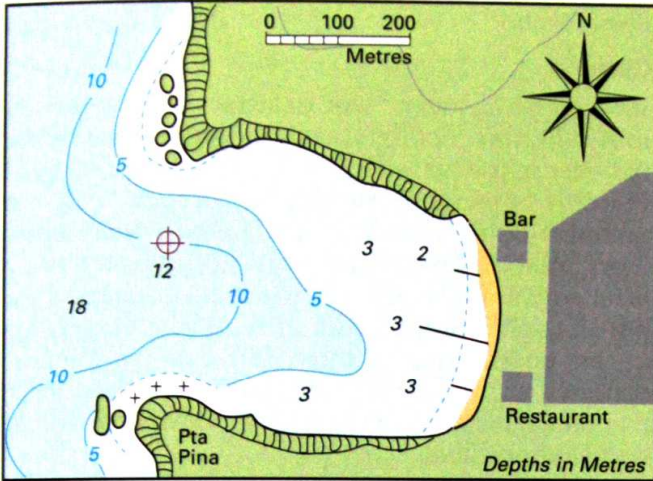
**MAGAZZINI** ⊕ 42°48'·0N 10°21'·5E

**Cala Bagnaia**

*Note* It is currently prohibited to anchor in this bay (see plan on page 111).

A U-shaped bay on the E side of Rada di Portoferraio. Open to the W and NW. There are numerous permanent moorings in the bay. Reasonable shelter except in strong N-W winds.

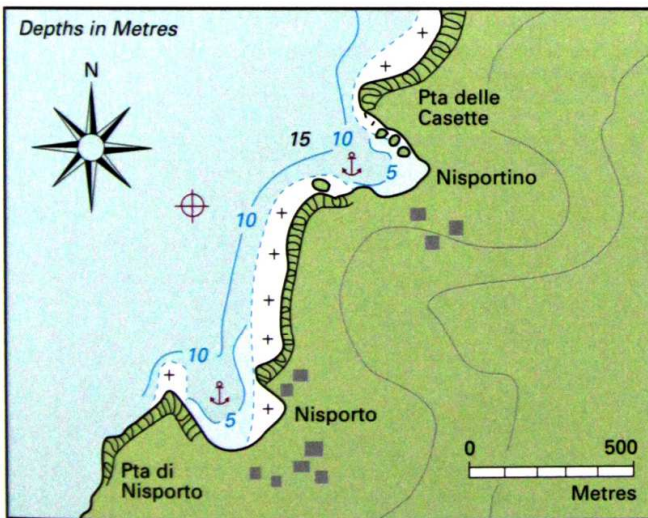
Restaurants ashore open in the summer.



**CALA BAGNAIA**  
 ⊕42°48'·65N 10°21'·5E

**Nisporto and Nisportino**

Two small coves lying 1.5 miles N of Cala Bagnaia. Anchor in 5–10m. The coves are open to the W–NW, but shelter is adequate in settled conditions. There are a few villas about the slopes and a pizzeria in Nisporto, the more southerly of the two coves.



**NISPORTO AND NISPORTINO**  
 ⊕42°49'·9N 10°22'·6E

**Capo Vita**

On the ridge running down to Capo Vita a large monument is conspicuous. On the E side of Capo Vita there is a delightful anchorage under Topi islet suitable in calm weather. Anchor in 5m on sand – good holding.

**ISOLA PALMAIOLA**

⊕9 1M W of I. Palmaiola 42°51'·9N 10°27'·0E

In settled weather it is possible to anchor in the lee of the island. Useful as a lunch stop, but not as an overnight anchorage.

**CAVO**

**Approach**

The small harbour lies on the E side of Capo Vita. *Conspicuous* Isola Palmaiola, which is easily distinguished, lies about two miles due E of the harbour. The monument on Capo Vita and the houses of the small village are readily identified.

VHF Ch 16.

**Mooring**

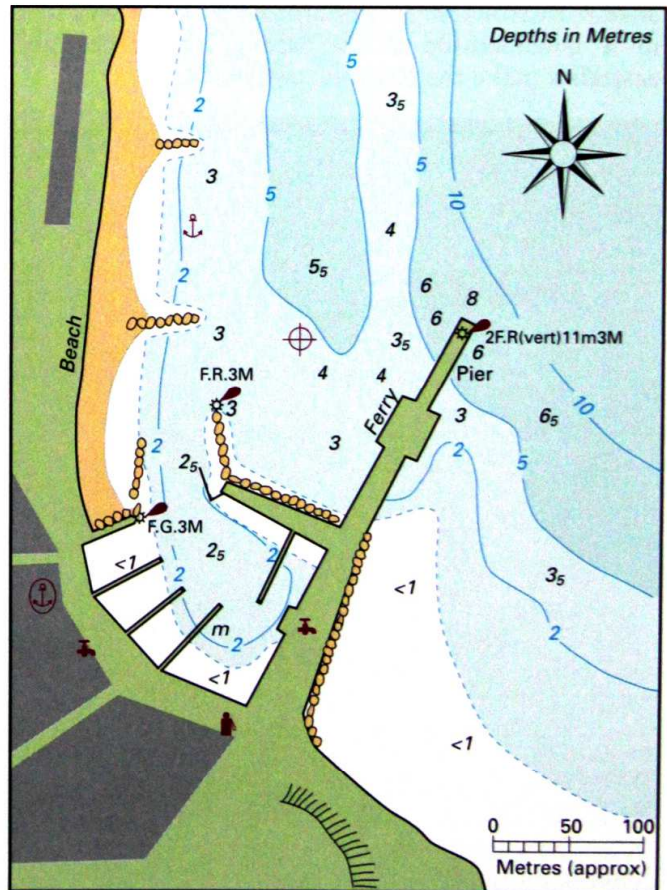
*Data* 230 berths. 40 visitors' berths. Max LOA 15m. Depths <1–2.5m.

*Berth* The harbour is mostly shallow and there is only room for small or medium-size yachts. Go stern-to where directed or wherever looks likely.

*Shelter* Good although strong NE winds send in a heavy swell.

*Authorities* Harbourmaster. *Ormeggiatori*.

*Anchorage* In calm weather or light offshore winds it is possible to anchor off to the N of the harbour. Anchor in 3–5m on weed over a sandy bottom. It may take more than one attempt to penetrate the weed. There always seems to be a bit of swell running



**CAVO**  
 ⊕42°51'·6N 10°25'·4E

here so it is not always the most comfortable place to be.

### Facilities

*Water* On the quay.

*Fuel* On the quay in the S corner of the basin although it shallows up here.

*Provisions* Basic provisions in the summer.

*Eating out* Restaurants in the summer.

*Other PO.* Bank. ATM. Ferry to Piombino and Portoferraio.

### General

A pleasant village in a delightful setting under green slopes with a long sandy beach running around the bay. The latter attracts large numbers of holiday-makers in the summer.

### RIO MARINA

#### Approach

A small harbour under the scarred slopes of the old open-cast mines behind the village.

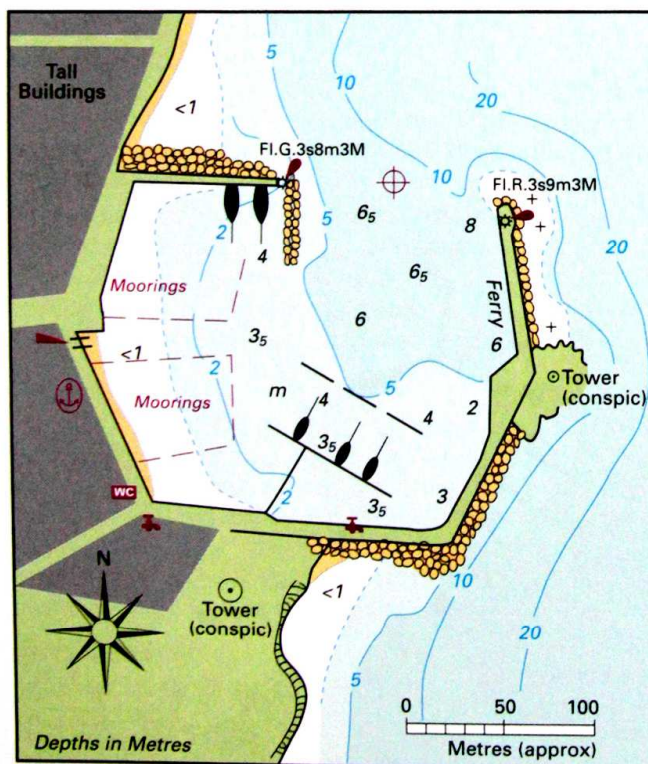
*Conspicuous* The scarred slopes and the tall 18th-century buildings in the village are conspicuous from some distance off. The tower on the elbow of the mole and that at the root of the mole stand out well.

#### Mooring

*Data* 100 berths. 15 visitors' berths. Max LOA 15m. Depths <1–4m.

*Berth* Go stern-to the pontoon in the SE corner of the harbour. Laid moorings at all berths.

*Shelter* Reasonable shelter although northerlies send in a considerable swell. Strong northerlies and easterlies make the harbour untenable.



### RIO MARINA

⊕42°48'·9N 10°25'·8E

*Authorities* Harbourmaster.

Ormeggiatori ☎/Fax 0565 914 352

### Facilities

*Water* On the quay

*Fuel* In the town about 250m away.

*Provisions* Most provisions can be found in the summer.

*Eating out* Restaurants and bars in the summer.

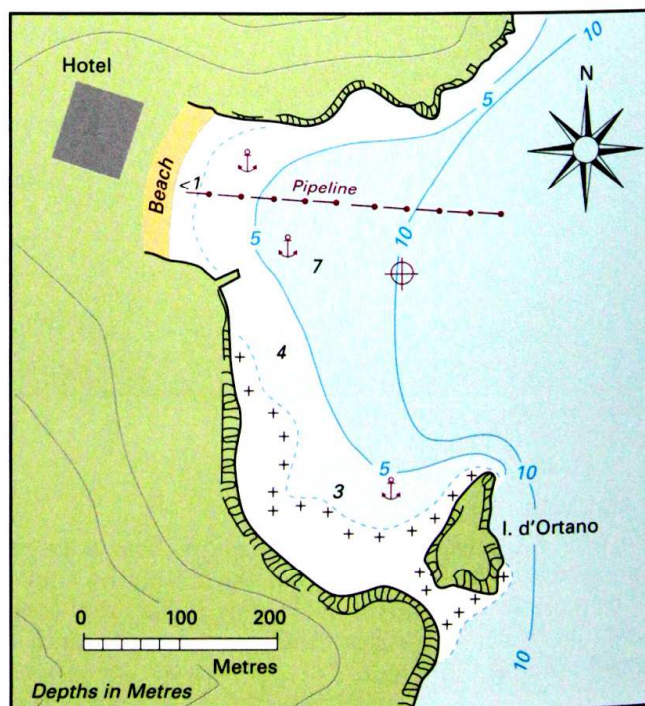
*Other PO.* Bank. Ferry to Piombino and Portoferraio.

### General

An attempt has been made to attract holiday-makers to Rio Marina, but the scarred slopes behind and the red dust in the air with any sort of wind deter most visitors from returning again. The last open-cast iron ore mine on the island, in the hills just behind Rio, was closed in 1984, so the sea is no longer stained a haematite red from the loading docks to the S of the port. Despite the scarred hinterland the place has a quaint charm with a tatty 18th-century elegance scattered around along with the dust. A museum in the village displays the variety of mineral wealth to be found on Elba.

### SENNO D'ORTANO

A small cove sheltered from the S by I. d'Ortano. Open to the east. At the N end of the cove there is a sandy beach at the bottom of a gorge cutting down through the hills. Anchor off the beach in 4–8m on sand, rock and weed, indifferent holding. Care is needed of the pipeline running out from the beach. With care, a yacht can anchor at the S end under I. d'Ortano. Care is needed of the rocky patches extending up to 100m off the coast and the islet in the southern corner. Anchor in 5–6m on a rocky bottom, poor holding.



### SENNO D'ORTANO

⊕42°47'·0N 10°26'·0E

The shelter from the prevailing southerlies in this southern corner is generally better than in the northern half of the bay. Ashore behind the beach there is a hotel complex with a restaurant, bar and minimarket.

**PORTO AZZURRO**

BA 131  
Italian 913/05

**Approach**

The harbour lies on the SE corner of Elba.

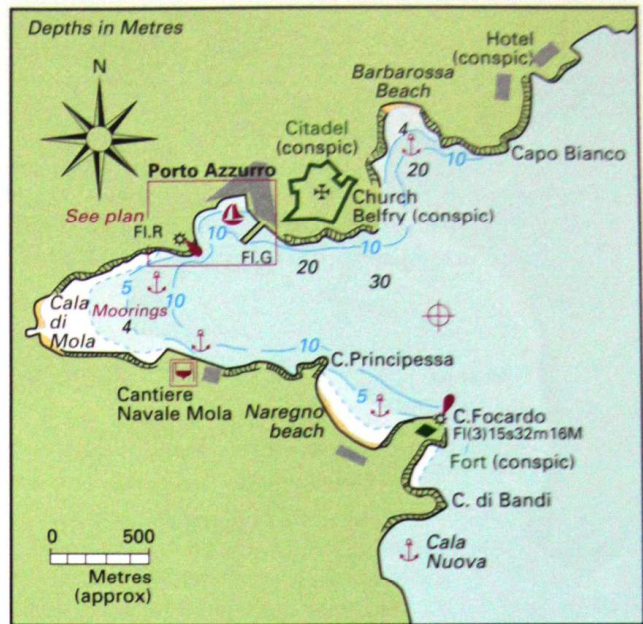
*Conspicuous* On the N side of the bay two large modern hotels are conspicuous. On the S side Fort Focardo and the light tower within it are conspicuous. The citadel standing atop a rocky promontory immediately E of the harbour, and a church and spire within the citadel, are also conspicuous.

**Mooring**

*Data* 190 berths. Approx 25 visitors' berths. Max LOA 20m. Depths 2–7m.

*Berth* Go stern-to on the quay or pontoon where convenient. In the summer a couple of bossy *ormeggiatori* may assist you to berth. There are several concessions in the harbour. The harbour can be very crowded in the summer and it is often worthwhile anchoring off for the night and coming in mid-morning when some of the boats will have left. Some laid moorings, otherwise use your anchor. The bottom is mud and sand, good holding.

Porto Azzurro looking SW. Note the pontoon layout has changed



**PORTO AZZURRO APPROACHES**

⊕42°45'6N 10°24'6E

*Shelter* Excellent shelter although with a strong scirocco there is a surge in the harbour, more bothersome than dangerous. A number of boats are wintered afloat here.

*Authorities* Harbourmaster and customs. Charge band 5/6 (August).

Balfin Marina ☎ 0586 899 827 / 0565 951 102

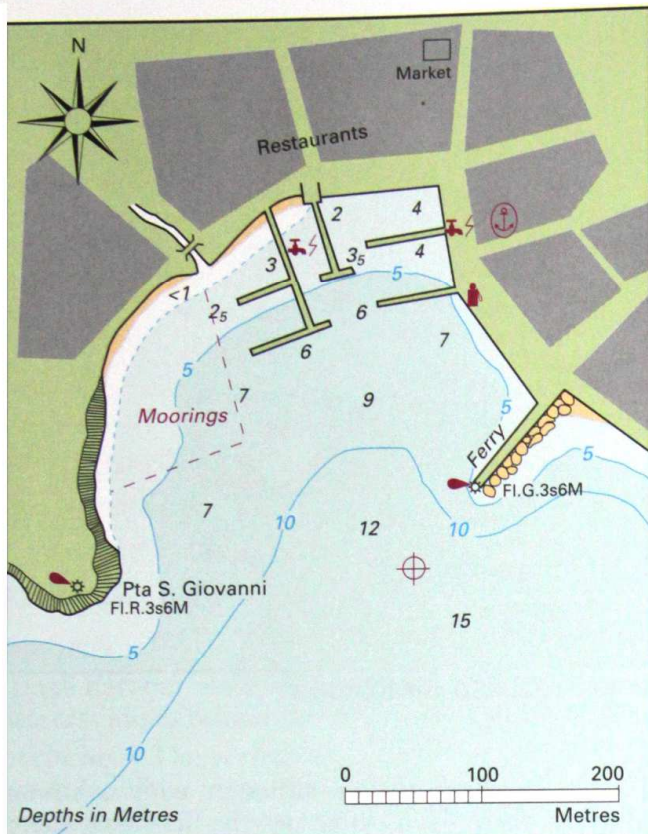
Email info@balfinsrl.it  
www.balfinsrl.it

Pontile Giovanni Messina ☎ 339 441 9634

Porto Luna Pontoon ☎ 0565 921 158 / 335 787 8832

Email portoluna@tiscali.it





**PORTO AZZURRO**  
 Ⓢ42°45'·7N 10°23'·9E

**Facilities**

*Services* Water and electricity on the quay. You will have to find the 'waterman' who will make a charge.  
*Fuel* On the quay (0800–1930).

*Repairs* Cantiere Navale Golfo di Mola boatyard on the S side of the bay. 200-ton travel-lift. Most repairs. Limited mechanical repairs in the village. Chandlers.

C.N Mola ☎ 0565 968 692

Email info@golfomola.it

*Provisions* Good shopping for provisions. A supermarket and small covered market in the village.

*Eating out* Good restaurants and pizzerias although many are open for the summer only.

**General**

Crowded it may be, but Porto Azzurro is a gem. The citadel above was built by the Spanish in the middle of the 16th century. In the 19th and 20th centuries it was a prison for hardened criminals, both the political and mafioso type, and the original name of the fortress, Longone, has always been associated with criminals in Italy. The name of the village was changed to Porto Azzurro to break this association and attract tourists to this beautiful spot and, judging by the numbers of tourists arriving here in the summer, the ploy has worked wonderfully well.

**ANCHORAGES AROUND PORTO AZZURRO**

There are several anchorages around the large bay.

*Barbarossa Beach* The cove on the E side of the citadel above Porto Azzurro. The prevailing SE winds send a swell in here, but in northerlies or in calm weather it is a pleasant anchorage.

Unfortunately moorings and a dive boat jetty in the NE corner leave very little room to anchor now.

*Cala di Mola* At the head of the bay. Moorings occupy much of the SW corner. The very end of the bay is shallow, but you can anchor 500m off the head in 4–8m on mud keeping clear of the ferry turning area. Good holding except in the NW corner where it is weedy. Good shelter, although there is some swell with S–SSW winds. There may be room to go stern-to among the charter yachts on the quay off the boatyard on the S side of the bay. It can be uncomfortable with any swell. Water and electricity. A charge may be made.

*Naregno Beach* Anchor under the lee of Capo Focardo in 6–12m on sand outside the buoyed swimming area. There is normally a reasonable lee from the prevailing southerlies here. A hotel and restaurant-bar ashore.

**Porto di Cala Nuova**

A large bay under Capo di Bandi which lies immediately S of Capo Focardo. The fort on Focardo is conspicuous. At the S end of the bay lies I. dei Topi. The bay is really only tenable in calm weather as the prevailing wind sends a swell in here. Anchor in any of the small coves in 5–10m. There are no dangers except close to the coast. The best anchorage is in the cove under Topi islet. There are some nice little beaches here and a wilderness of pine forest on the slopes around.

**Cala del'Innamorata (Palazzo)**

A small cove lying immediately N of the Isolotti Gemini. Care must be taken of the Scog. Corbelli and of the reef running SW from Isolotti Gemini in the southern approaches to the cove. Anchor in 2–4m on a sandy bottom. Open to the W–NW. Restaurant ashore.

**Punta Morcone anchorage**

A larger bay lying immediately N of Cala del'Innamorata. Anchor where convenient in 2–5m on a sandy bottom. Open to the W and really only suitable in calm weather. Small hotel and several restaurants ashore.

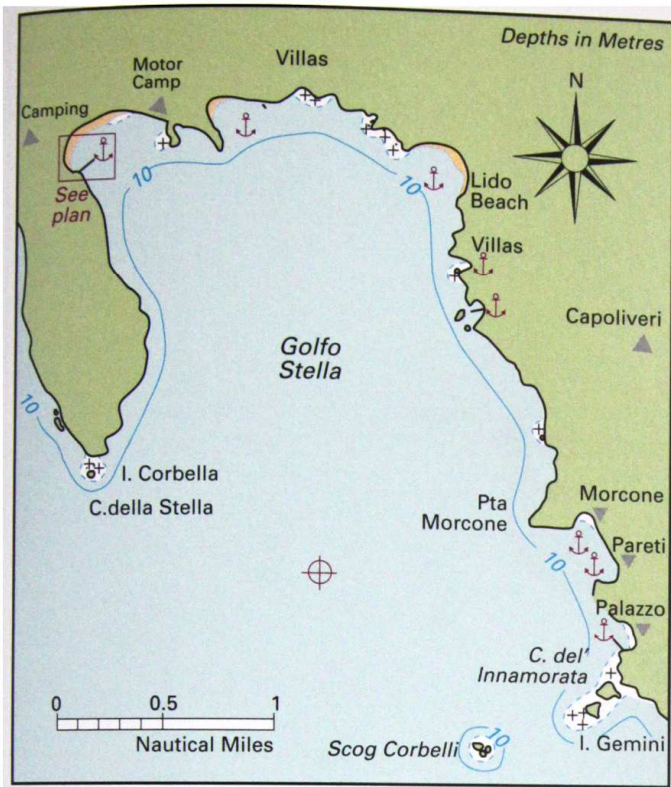
**Golfo Stella**

A large bay lying on the E side of Capo della Stella. Villas have been built on the slopes around the gulf and there are several camping grounds near the shore.

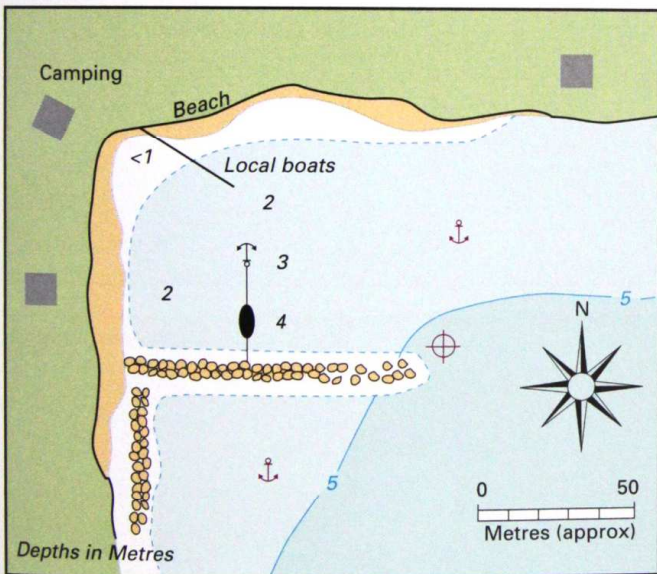
In calm weather or light SE winds, a yacht can anchor in the NE corner off Lido Beach but there is an uncomfortable swell with E winds. Anchor in 5–10m on sand.

At Ansa di Margidore in the NW corner there is a rough stone breakwater and a pontoon used by local boats. A small yacht can anchor fore and aft or anchor with a long line to the breakwater, although it is often crowded here. This NW corner is particularly attractive and behind the breakwater you have protection from all but strong southerlies. There are several camping grounds where provisions can be obtained and several restaurants close to the neck of the headland.

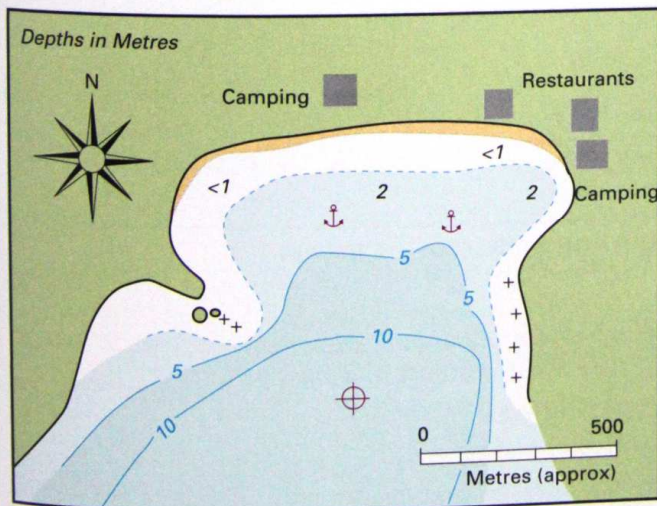




**GOLFO STELLA**  
 ⚓ 42°43'·8N 10°20'·7E



**ANSA DI MARGIDORE (Golfo Stella)**  
 ⚓ 42°45'·6N 10°19'·3E



**GOLFO DELLA LACONA**  
 ⚓ 42°45'·1N 10°18'·2E

**GOLFO DELLA LACONA**

A large bay on the W side of the promontory that terminates in Capo della Stella. Anchor where convenient at the head of the bay in 3–7m on a gently sloping sandy bottom. The best place here is tucked into the NE corner. Open only to the south. Numerous hotels and camping grounds ashore where you can find basic provisions and numerous restaurants scattered around the shore.

**MARINA DI CAMPO**

**Approach**

A small harbour on the W side of Golfo di Campo. The solid rock promontory dropping sheer into the sea at Capo Poro is easily identified.

*Conspicuous* The light structure on Capo Poro is not conspicuous, but the high promontory is. From the W and S the village and harbour of Marina di Campo cannot be seen. However the village of San Pietro di Campo, a tower in Pila and two villages on the slopes above the harbour are conspicuous. Closer in, the tower above the harbour and the harbour mole are visible.

*By night* Use the light on Capo Poro Fl.5s160m16M although the actual range appears to be about half the stated range. Closer in use the light immediately S of the harbour Fl.3s34m10M (range again about half of that stated).

**Mooring**

*Berth* Go stern-to the outer mole. Laid moorings at most berths. Mooring buoys outside the harbour for visitors. Large yachts may have to anchor off. The bottom is sand with a few rocks – good holding  
*Shelter* Better than it looks but strong SE winds would make the harbour uncomfortable and possibly untenable with a southerly gale.

*Authorities* Harbourmaster and customs. *Ormeggiatori* administer berths and moorings. Charge band 4.

*Anchorage* Anchor off to the N of the harbour outside the buoyed swimming area in 4–7m on sand. The anchorage is open to southerlies although light southerlies tend to lift over the land leaving just a bit of uncomfortable slop rolling in. With moderate N–E winds the anchorage is reasonably secure.

**Facilities**

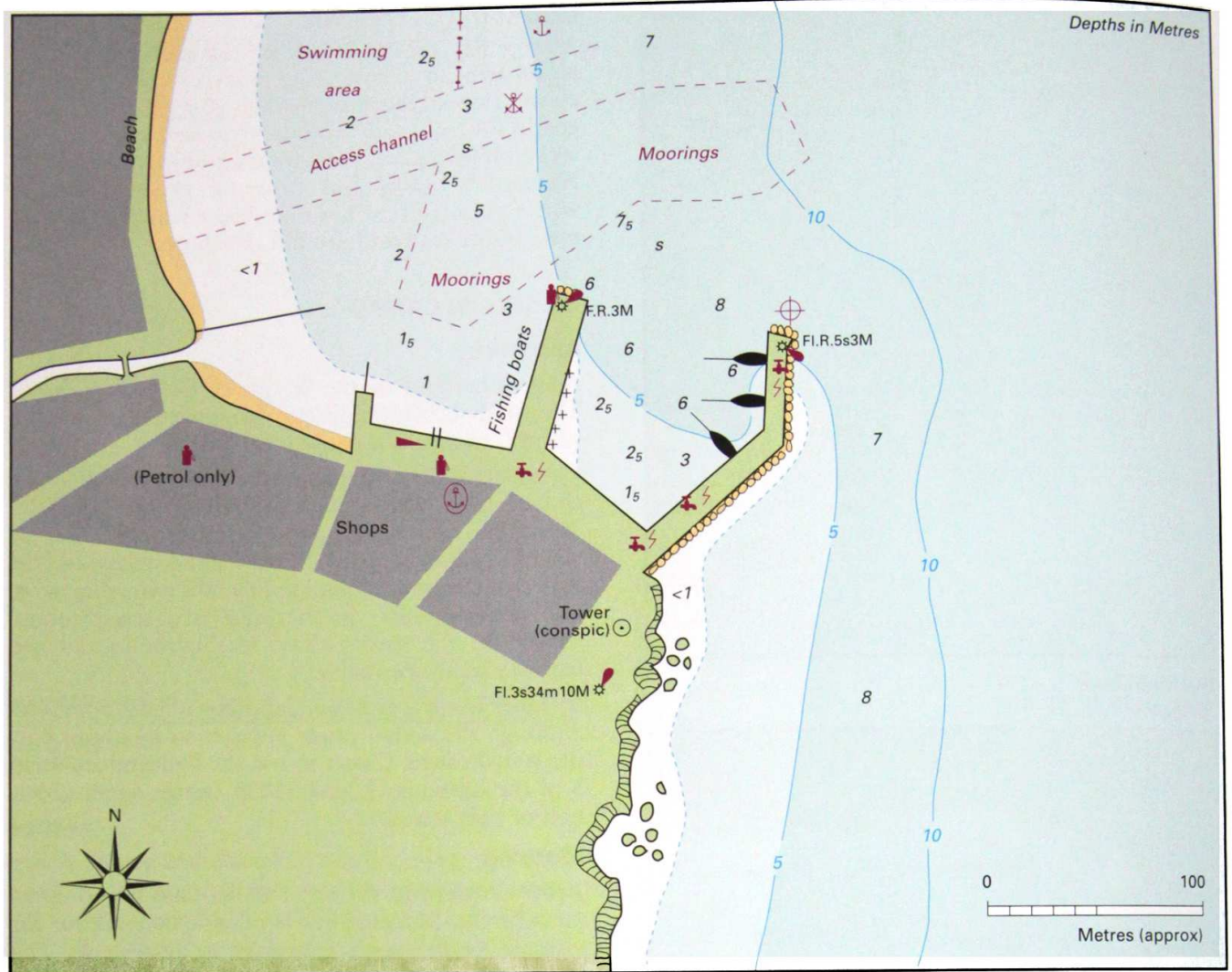
*Services* Water and electricity boxes on the quay, but you need to find someone switch them on. Alternatively a public fountain in the square nearby.  
*Fuel* On the end of the inside mole (0800–1900).

*Repairs* 50/5-ton cranes. Limited mechanical repairs. Chandlers.

*Provisions* Good shopping for provisions. Supermarket near the river. Ice from the fish market.  
*Eating out* Good restaurants, trattorias and pizzerias.

*Other* PO. Banks. ATMs. Buses to Portoferraio.

## II. The Tuscan islands and adjacent mainland coast



**MARINA DI CAMPO**  
 $\oplus 42^{\circ}44'.55N 10^{\circ}14'.35E$

### General

Lying on the edge of a cultivated plain and hemmed in by mountains, Marina di Campo is an attractive and popular tourist resort. At the harbour you are close to the old part of town and away from the activity on the beaches further around the bay. The inner harbour is packed with trawlers adding a touch of colour and chaos to the place. Good fresh fish can be obtained at the fish market nearby.

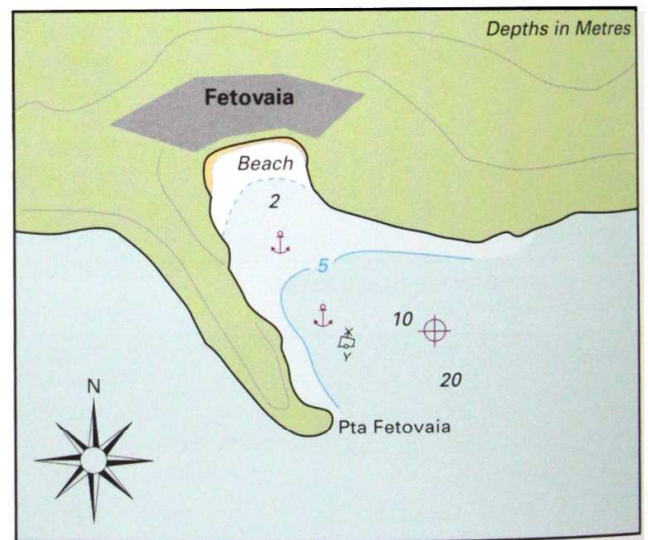
### Cavoli

$\oplus 42^{\circ}44'.2N 10^{\circ}11'.0E$

A U-shaped bay immediately W of Punta Cavoli. Open only to the south. The E half of the bay has a line of buoys across it in the summer marking off the bathing area. Local boats are kept on laid moorings around the rest of the bay. Anchor where possible in 3–5m. Restaurants and bars ashore.

### Barbatoia (Fetovaia)

A bay tucked under the E side of Punta Fetovaia. The shelter is not as good as it might appear on the chart. Anchor in 2–8m where convenient. A number of local boats are kept here on permanent moorings in the summer. Although not well sheltered, it is a



**GULF OF BARBATOIA - FETOVAIA**  
 $\oplus 42^{\circ}43'.6N 10^{\circ}09'.5E$

picturesque place and well worth a visit in settled weather. Restaurants and bars ashore.

### San Andrea

$\oplus 42^{\circ}48'.5N 10^{\circ}08'.5E$

A bay and holiday resort approximately two miles W of Marciana Marina. Much of the bay is a

restricted area and yachts should enter on the W side of the bay and anchor in a buoyed off area. The bay is entirely open to the N and really only suitable in calm weather. There is a short quay but it is mostly rock-bound. Restaurants and bars ashore.

**MARCIANA MARINA**

**Approach**

The harbour is not easy to identify from seaward as the rock breakwater blends into the coast.

*Conspicuous* The large elegant houses of the village and the tower near the root of the mole are conspicuous.

*By night* A beacon off the pontoon on the SW side is lit F.R but should not be relied on.

VHF Ch 16 and Ch 09 for Circolo della Vela.

**Mooring**

*Data* 150 berths. Max LOA 30m. Depths <1-7m.

*Berth* Go stern or bows-to the quay in the NW corner or stern or bows-to the pontoon on the S side of the harbour. Alternatively you may find a berth on the YC pontoon or on the concession pontoons off the breakwater. There are laid moorings at administered berths. If you have to use your own anchor there are numerous permanent mooring chains on the bottom, but they can usually be seen



Marciana Marina looking west

by day. The bottom is mud and clay over rock - generally good holding.

*Shelter* Normally adequate in the summer. With fresh NE-E-SE winds it can be uncomfortable and with gales from the NE-E-SE the harbour can be untenable.

*Authorities* Harbourmaster. Club attendants on the pontoons. Charge band 4.

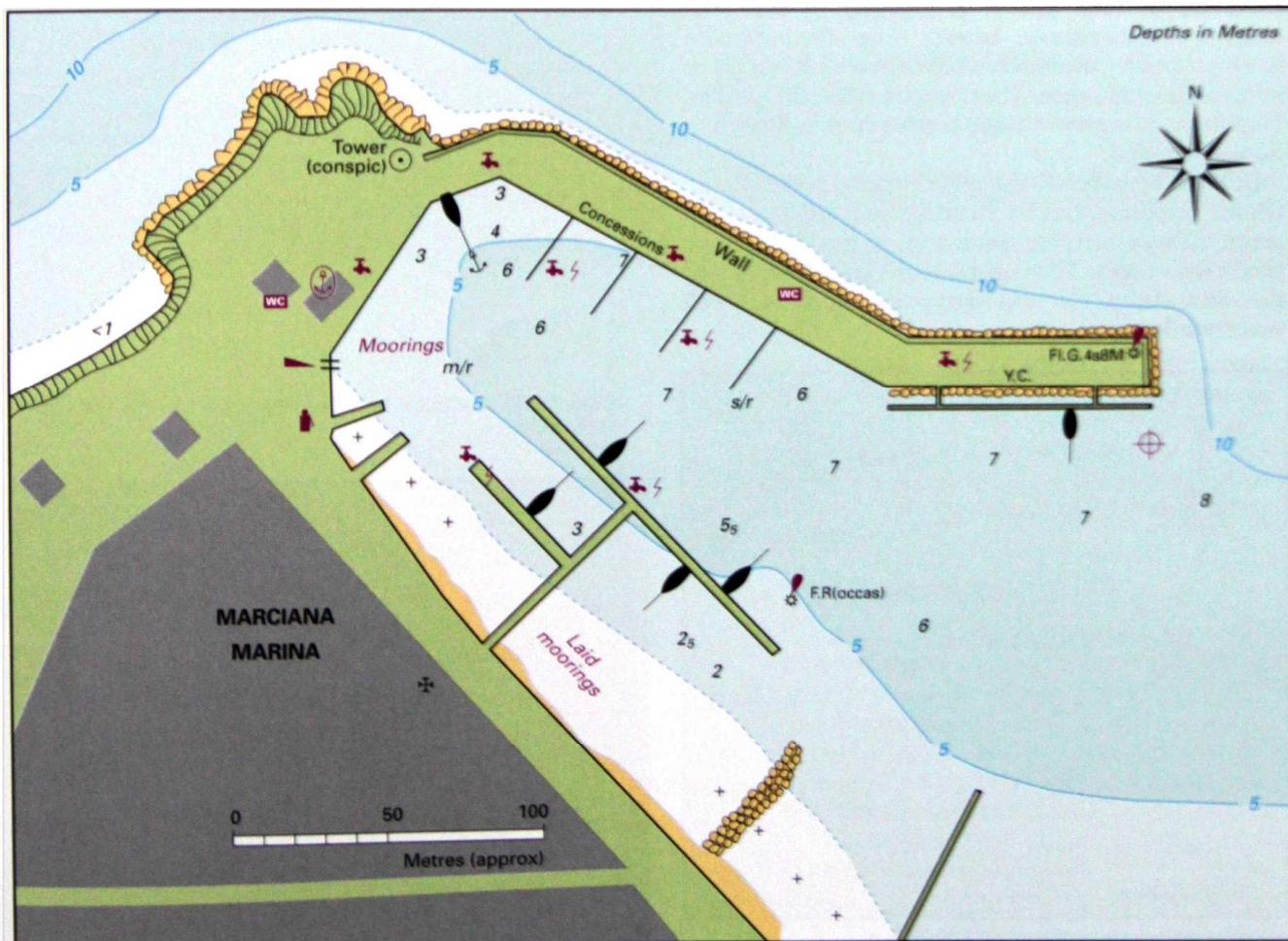
Circolo della Vela ☎ 0565 99027 Fax 0565 904 325

Email [segreteria@cvmm.it](mailto:segreteria@cvmm.it)

[www.cvmm.it](http://www.cvmm.it)

**Facilities**

*Services* Water and electricity at most berths.



**MARCIANA MARINA**  
 Ⓢ42°48'5N 10°11'9E

## II. The Tuscan islands and adjacent mainland coast



Marciana Marina looking south. Note more pontoons are now in place

**Fuel** On the quay although it is shallow off the quay.  
**Repairs** A 50-ton crane available. Mechanical repairs. Chandlers.

**Provisions** Good shopping for provisions. Fish market. Ice factory near the village.

**Eating out** Good restaurants, trattorias and pizzerias.

**Other** PO. Banks. ATMs. Bus to Portoferraio.

### General

This was once the fashionable quarter for a country residence in Elba and it is pleasing to this day: elegant 19th-century houses line the seafront amongst palms, oleanders and magnolia. It is a green and colourful spot that enchanted the exiled Napoleon. It is now a small tourist resort, though in no way spoiled.

Behind the harbour the highest peak in the island, Monte Capanne, can be ascended in a *cabinovia*, an aerial railway carrying small and, to my mind, quite precarious cages. The rugged hinterland around and the view from the top make an excursion well worthwhile.

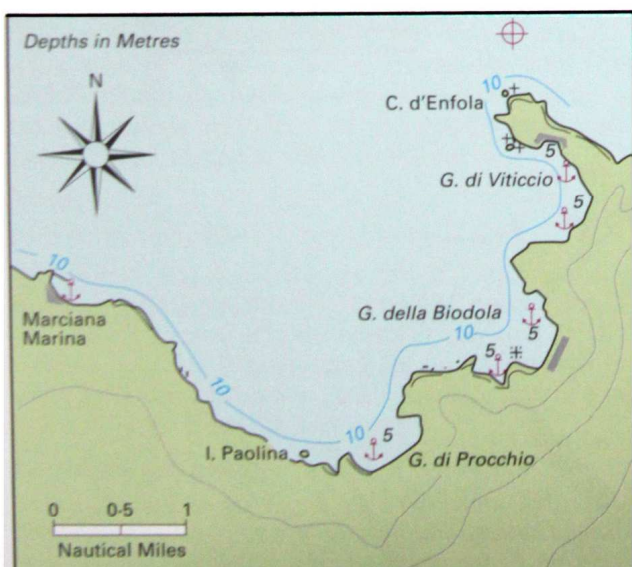
### GOLFI DI PROCCHIO, BIODOLA, VITICCIO

To the E of Marciana Marina there are three bays affording reasonable shelter in settled weather.

**Golfo di Procchio** Anchor in 7–9m on sand outside the buoyed swimming area. A sandy beach ashore hemmed in by rock. The site of ancient Cervinia, where copper and iron was smelted, is nearby. Immediately to the W is an islet, christened locally as Isola Paolina, because, it is said, Pauline the sister of Napoleon, used to bathe here.

**Golfo della Biodola** Anchor in 6–8m off the beach outside the buoyed swimming area. Hotel and restaurants ashore.

**Golfo di Viticcio** The bay directly under Capo d'Enfola. Anchor in 4–10m where convenient. No swimming area, perhaps on account of the rocky beach. Under the isthmus joining Capo d'Enfola to the island there is a short pier. Restaurants ashore.



MARCIANA MARINA TO CAPO D'ENFOLA  
42°50'25N 10°15'8E (0.5M N of C. d'Enfola)

Elba. Golfo di Viticcio between Marciana Marina and Capo d'Enfola

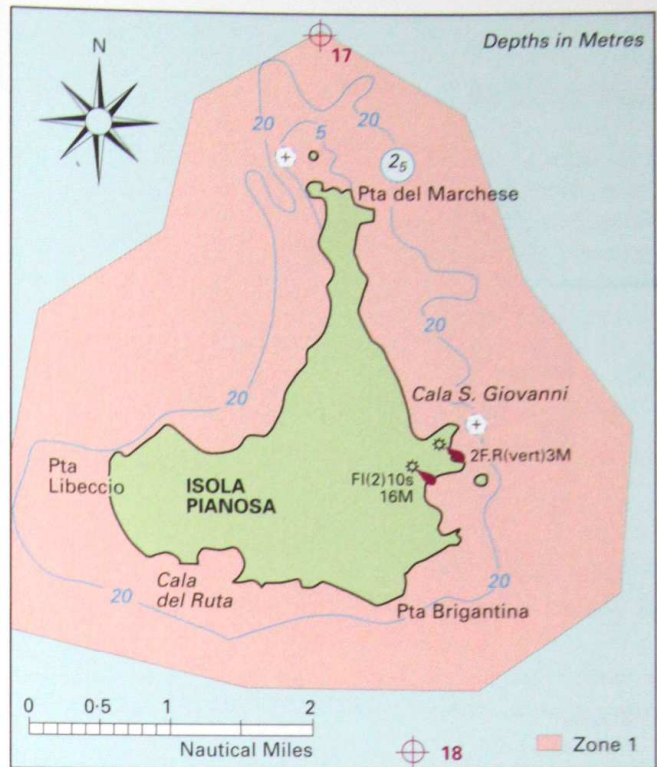




Elba. Golfo della Biodola between Marciana Marina and Capo d'Enfola



Elba. SW corner of Golfo di Procchio between Marciana Marina and Capo d'Enfola



**ISOLA PIANOSA**

- ⊕17 1M N of Pte del Marchese (I. Pianosa)  
42°39'·0N 10°04'·9E
- ⊕18 1M S of Pta Brigantina (I. Pianosa)  
42°33'·2N 10°05'·5E

**Isola Pianosa National Park**

A prison island until 1997, Isola Pianosa is now part of the Tuscan Archipelago National Park.

**Zone 1**

Access, navigation, stopping, anchoring, fishing, swimming and diving prohibited within 1M.

☎ 0565 919 411  
Email info@islepark.it  
www.islepark.it

**Isola Pianosa**

In contrast to the other islands in the Tuscan archipelago, Pianosa is a low barren island nowhere more than 30m (100ft) high. From seaward you will see the buildings on the island before you sight the island itself. The only harbour is the small rock-bound harbour at Cala San Giovanni. The island is a National Park and all unauthorised vessels are prohibited to navigate within 1M of the island.

**Formiche di Montecristo**

- ⊕19 1M W of Scoglio Africa 42°21'·4N 10°02'·6E

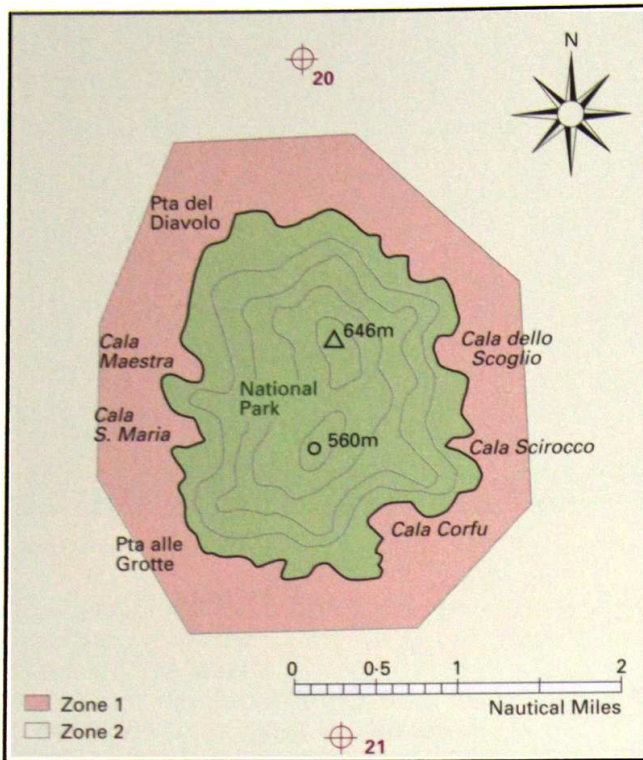
A bank with an above-water rock, Scoglio Africa, on it, lying about 10 miles W of Isola Montecristo. Although Scoglio Africa is only just above water, the light tower on it, a round stone tower 15·8m (52ft) high, is conspicuous. A light is exhibited: Fl.5s12M.

**Note** The current in the vicinity of Formiche di Montecristo sets towards the E and can be quite

strong at times. Although it is not reported anywhere, several yachts have experienced a magnetic anomaly in the vicinity of Formiche di Montecristo. On passage from Corsica to the Tuscan Islands this magnetic anomaly coupled with the E-going current can give you some headaches over your navigation.

**Isola di Montecristo**

A high conical island that dominates the seascape. Its highest point is at Picco del Segnale (648m/2126ft) and it slopes down more or less evenly to the sea. The island is a nature reserve and although there are no totally sheltered anchorages, there are several deep bays affording some shelter depending on the wind and sea. It is said to be infested with adders. Why Alexandre Dumas should have chosen Montecristo for *The Count of Montecristo* is not known, but his great 19th-century thriller has imbued the island with an aura that can still be felt. HM Denham records that a



### ISOLA DI MONTECRISTO

- ⊕20 1M N of I. di Montecristo  
42°22'0N 10°18'8E
- ⊕21 1M S of I. di Montecristo  
42°17'8N 10°18'8E

### Isola di Montecristo National Park

#### Zone 1

Access, navigation, short- and long-time stays, anchoring, fishing, swimming and diving prohibited within 1,000m.

#### Zone 2

Extends up to 3M from the coast. Fishing regulated by park authorities.

Forest Warden ☎ 0566 40019 Park office ☎ 0565 919 411

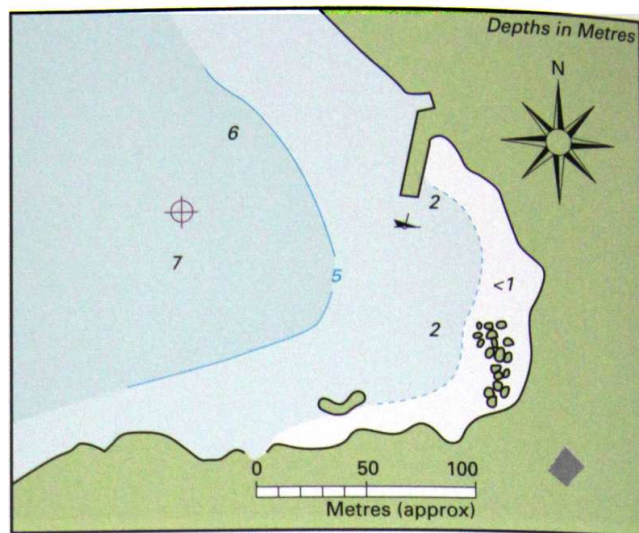
Email [info@islepark.it](mailto:info@islepark.it)

[www.islepark.it](http://www.islepark.it)

number of eccentric individuals, including an Englishman who styled himself 'The Count of Montecristo', went to live on the island at the end of the last century.

**Note** The island is officially designated a nature reserve and, as such, anchoring and landing is prohibited, except in case of an emergency and with permission from the authorities in Elba. The wardens of the island take their job very seriously and will turn yachts away. This should be borne in mind if you are making a longish passage and expecting to find shelter for the night. I have retained the plans in the book as it might be necessary some time for a yacht to find refuge in bad weather.

**Caution** There can be violent gusts and wind-shifts up to a mile off the island. Care needed.



### CALA MAESTRA

⊕42°20'3N 10°17'5E

#### Cala Maestra

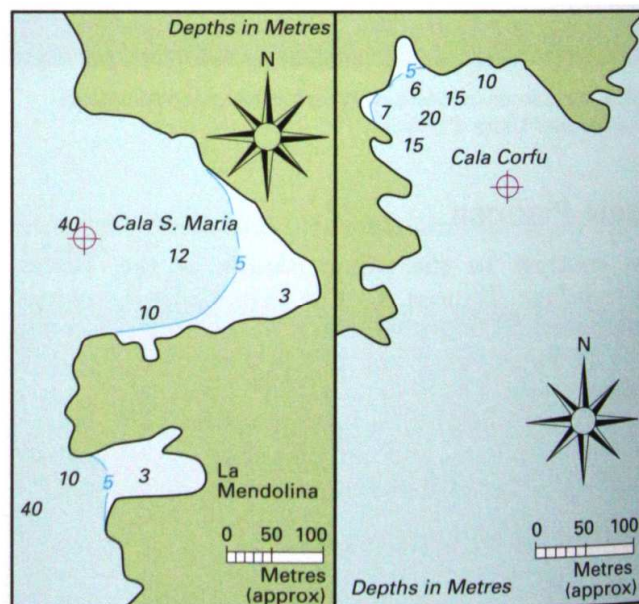
A small cove on the W side. There is a small mole on the N side of the cove, but it is too shallow to use. Anchor in 5–7m. Open to the NW–W.

#### Cala Santa Maria

A bay immediately S of Cala Maestra. Anchor in 5–12m. Open to the NW–W. Immediately below Cala Santa Maria there is the small cove of La Mendolina open only to the west.

#### Cala Corfu

A deep bay on the SE side of the island. It is very deep until close to the shore. Open to the S and east.



### CALA SANTA MARIA

⊕42°19'7N 10°17'4E

### CALA CORFU

⊕42°19'1N 10°19'2E

## Isola del Giglio

A mountainous island lying approximately 25 miles E of Montecristo and separated from the mainland by a channel about eight miles across. Its coasts are

- ⊕14 1M N of Pta del Fenaio (I. del Giglio)  
42°24'·2N 10°52'·9E
- ⊕15 1M S of Pta del Capel Rosso (I. del Giglio)  
42°18'·2N 10°55'·3E



ISOLA DEL GIGLIO

steep-to and it rises to 498m (1,634ft) at Poggio della Pagana in the middle.

The harbour is on the NE coast where most of the population lives, but the old Aragonese walled village of Giglio (Castello) is still inhabited. Castello, some 400m (1,300ft) up the side of the mountain, was the refuge when pirates raided the islands. The old castle and walled village, all narrow alleys and crenellated walls, is well worth a visit. Isola del Giglio means literally 'the island of the lily': apparently it is covered with lilies in the spring.

### GIGLIO PORTO (Giglio Marina)

#### Approach

Although the harbour is difficult to locate from the N and S, the castle and village of Castello are conspicuous.

*Conspicuous* Castello is easily identified. Closer in, the houses of Giglio Marina and the harbour moles will be seen.

VHF Ch 16 (0800–1300).

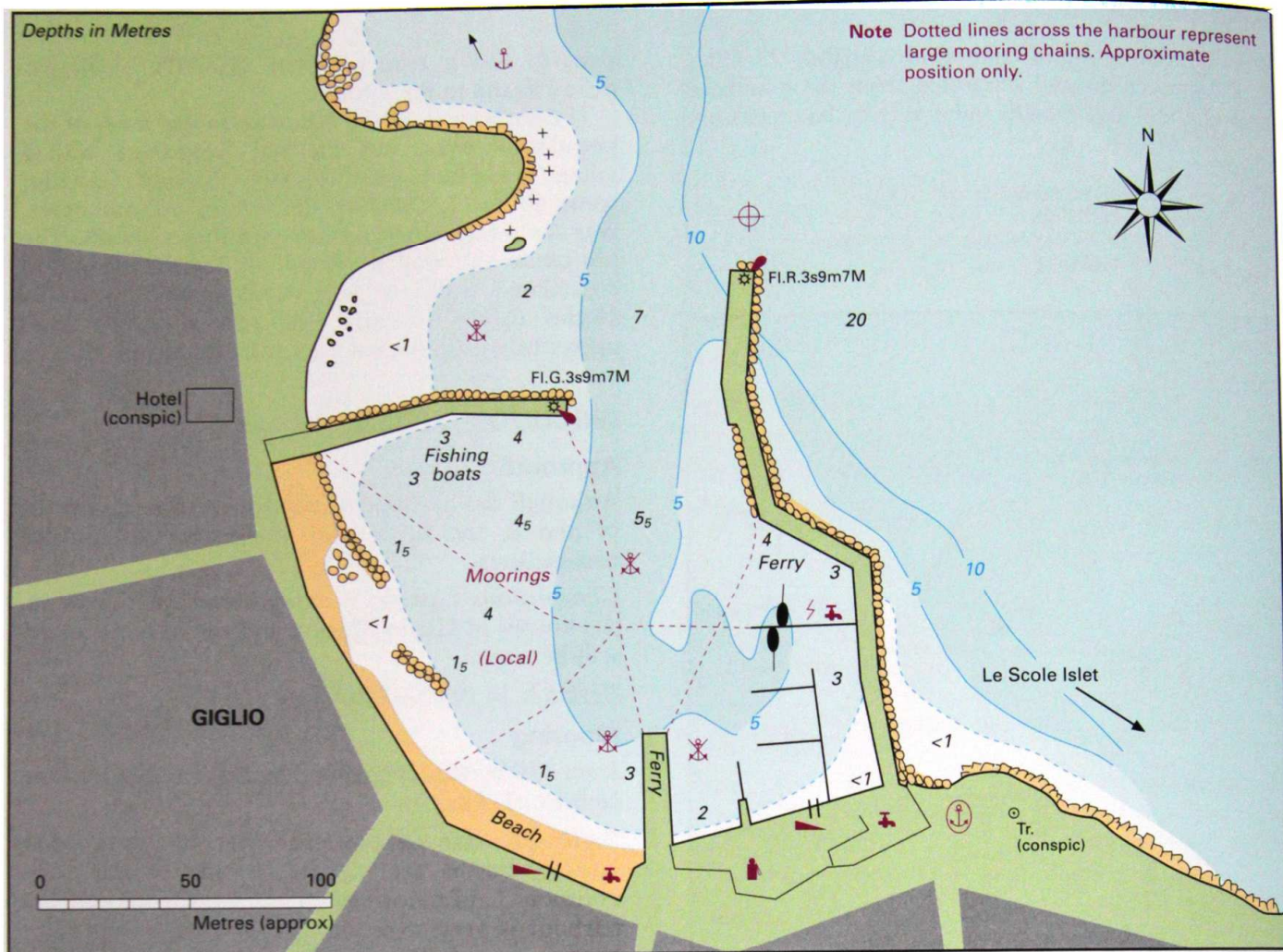
#### Mooring

*Data* 150 berths. 20 visitors' berths. Max LOA 20m. Depths <1–5m.

*Berth* Go stern or bows-to where directed. Most visitors' berths are on the N side of the outer pontoon. Laid moorings tailed to the pontoon. The harbour is very crowded in the summer and many berths are reserved for the summer months. The *ormegiatori* will let you know whether there is a berth with much shouting and waving. The large mooring chains on the bottom can normally be seen so if you need to the anchor can be placed safely away from them. If you do foul the chains there will be a local who makes a living from freeing fouled anchors.

Giglio Marina looking west





**GIGLIO MARINA**  
 $\oplus 42^{\circ}21'65N 10^{\circ}55'2E$

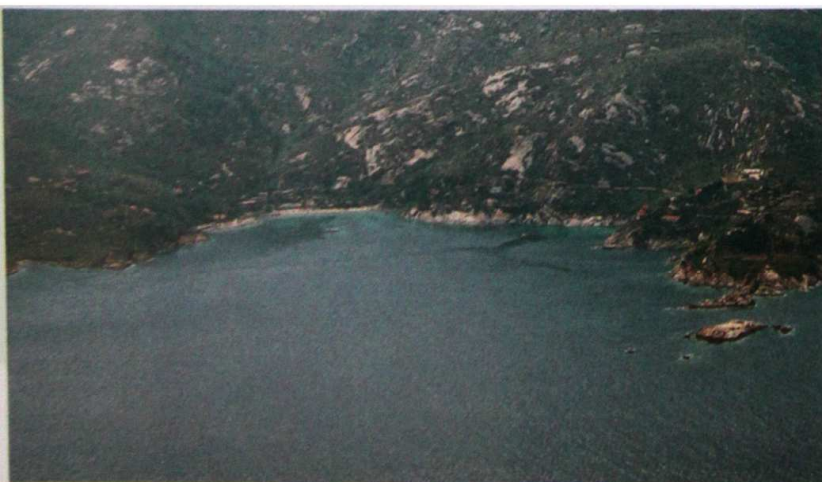
**Shelter** Good all-round shelter although even moderate N-NE winds make it uncomfortable.

**Authorities** Harbourmaster. *Ormeggiatori*. Charge band 4.

*Ormeggiatori* ☎ 0564 809 517

**Anchorage** In settled weather a yacht can anchor in Cala Canelle immediately S of the port under Le Scole rocks. Anchor at the head of the bay which is

Giglio. Cala Canelle to the S of Giglio Marina



quite deep. It is also possible to anchor off in calm weather in the bight to the N of the harbour.

### Facilities

**Service** Water and electricity (220V) on the quay. Water reported non-potable.

**Fuel** Close by on the waterfront.

**Repairs** 8-ton crane. Limited mechanical repairs. Chandlers.

**Provisions** Good shopping for provisions on the waterfront.

**Eating out** Restaurant and pizzerias in the summer.

**Other** PO. Bank. ATM. Ferry to Santo Stefano. Occasional buses to Castello.

### General

The small harbour and village is picturesque. Tourism has revived the island's flagging economy but the inhabitants seem intent on making sure that the tourists don't despoil the island, with signs everywhere telling you not to drop litter, pick wildflowers, or even make too much noise - Hooray Henries should stay away from here. Though tourism makes Giglio lively enough in the summer, in the winter it all closes down, wonderfully so. A bus runs approximately every hour to Castello and it repays the effort to make the trip. The energetic can walk up a footpath instead.

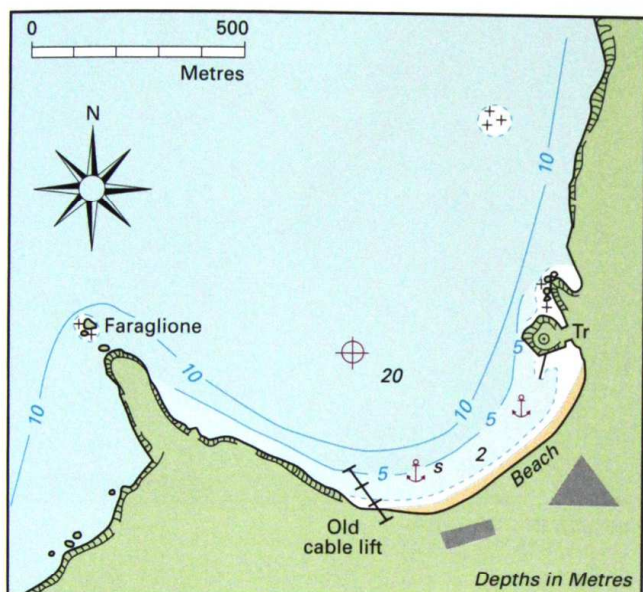


**OTHER ANCHORAGES**

South of Giglio Marina are two anchorages suitable in settled weather. In Cala Canelle anchor in 6–10m and in Cala Capazzollo in 5–10m. A sand over rock and weed bottom in both bays. Open SE.

**Seno di Campese**

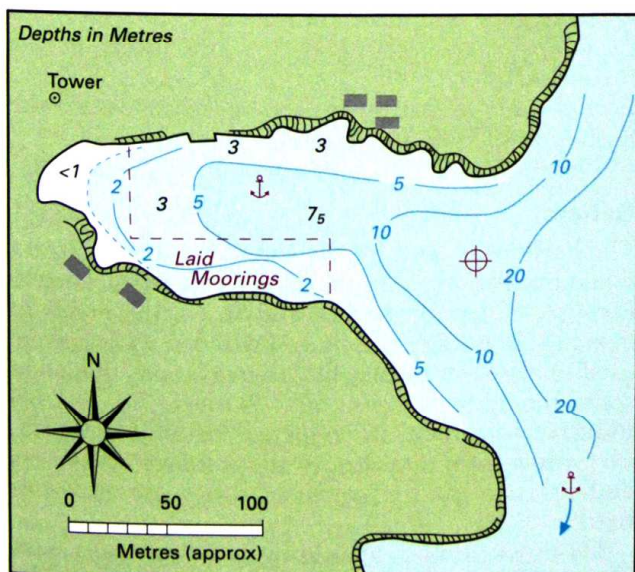
A large bay on the NW of the island. Care should be taken of a reef with just 2m over it in the northern approaches. Faraglione rock and the tower at the NE end of the beach will be seen. Anchor in 3–8m off the beach on a sandy bottom, good holding.



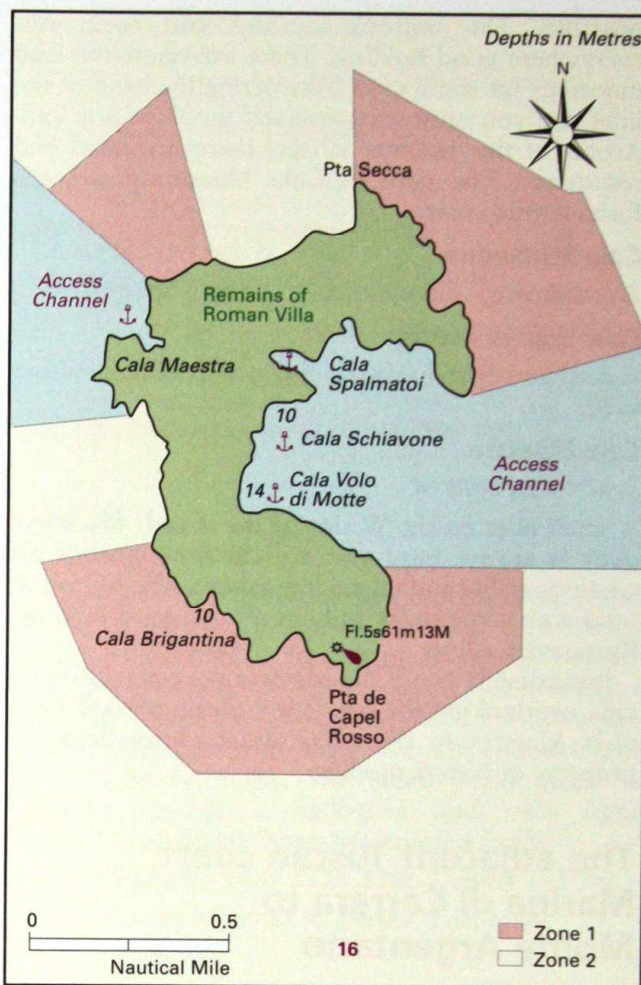
**SENO DI CAMPESE**  
 ⚓ 42°22'·2N 10°52'·4E

Open to the W–NW but good shelter from southerly swells.

A holiday village and villas have been built around the slopes. Restaurants and bars open in the summer. Artisan food shops and a supermarket. Bus to Giglio.



**CALA SPALMATOI**  
 ⚓ 42°15'·15N 11°06'·5E



**ISOLA DI GIANNUTRI**

⚓ 16 1M S of Punta del Capel Rosso (I. di Giannutri)  
 42°13'·3N 11°06'·6E

**Isola di Giannutri National Park**

Part of the Tuscan Archipelago National Park since 1996, the island and its waters are now a marine reserve.

**Zone 1**

Access, navigation, short- and long-time stays, anchoring, fishing, swimming and diving prohibited. Two access channels for vessels, to Cala Maestra and Golfo Spalmatoi.

**Zone 2**

Extends up to 3M from the coast. Fishing regulated by park authorities.

**Isola di Giannutri**

The southernmost and smallest island of the Tuscan archipelago, Giannutri is situated about 8½ miles SE of Isola del Giglio. It is barren and comparatively low-lying with the highest point, Punta Mezzogiorno (93m/305ft) near the southern end. Until recently it was barely inhabited, but villas and a development at Cala Spalmatoi have been built in the last few years. There are several anchorages on the E side suitable for yachts.

**Cala Spalmatoi**

A cove on the E coast offering good shelter from all but strong SE–E winds. Anchor in 5–8m where

possible. The bottom is sand and rock, not everywhere good holding. There are numerous laid moorings for small craft obstructing the head of the inlet and you must tuck yourself in where you can. Ashore at the 'summer village' there is a hotel and restaurant. The path to Cala Maestra passes the Roman villa ruins.

**Cala Schiavone**

A rather deep and open cove just S of Spalmatoio.

**Cala Volo di Motte**

A deep and open bay in the SW corner of Spalmatoio Gulf.

**Cala Maestra**

⊕ 42°15'·3N 11°05'·5E

A small inlet on the W side of the island. The small quay is always busy and a yacht must anchor off where possible and take a line ashore. The bottom is sand with some rocks and not always good holding. Restaurant ashore.

Immediately N of Cala Maestra is a ruined Roman villa overlooking the sea. It is a pleasant walk from Cala Maestra to the villa, said to have been the property of Nero's mother.

**The adjacent Tuscan coast:  
Marina di Carrara to  
Monte Argentario**

**MARINA DI CARRARA**

BA 118  
Italian 61

**Approach**

*Conspicuous* There are usually a number of cargo ships anchored off the harbour. A large apartment block immediately E of the harbour, the harbour moles, and cranes and loading gantries within the harbour are all conspicuous.

VHF Ch 12, 15, 16 for port authorities. Ch 16, 06 for Club Nautico.

**Mooring**

*Data* 250 berths. 10 visitors' berths. Max LOA 30m. Depths 3–8m.

*Berth* Go stern-to where directed at the yacht club. There are laid moorings tailed to the pontoons.

Yachts are also kept on moorings near the entrance to the harbour.

*Shelter* Good, although southerlies send in an uncomfortable swell. Local boats are wintered afloat.

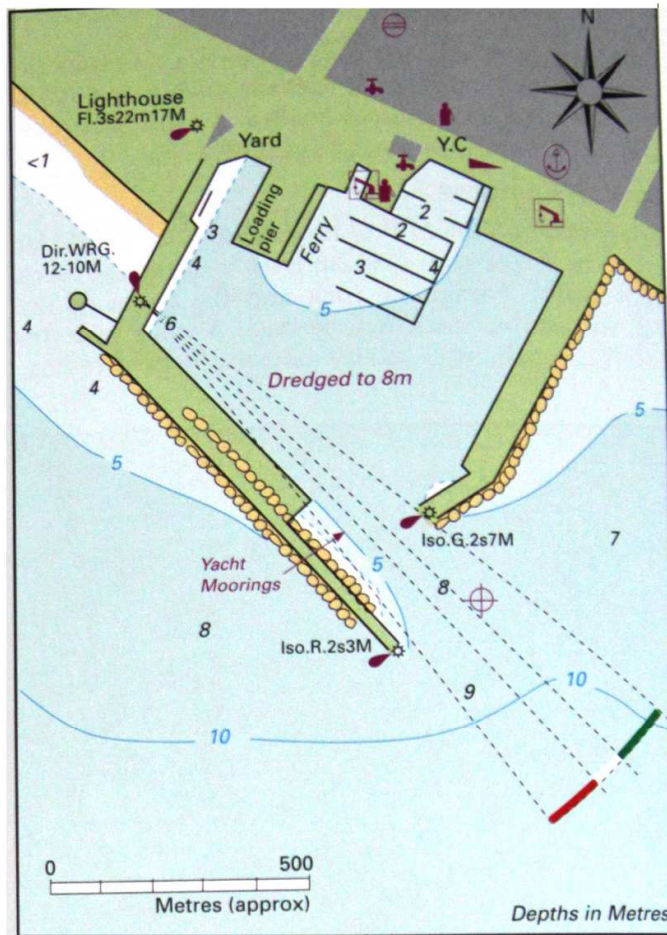
*Authorities* Harbourmaster and customs. Club helpers who are friendly and helpful. Charge band 2/3.

Club Nautico di Carrara Marina ☎ 0585 785 150  
Fax 0585 785 364

Port Authority ☎ 0585 787 205 Fax 0585 788 346

Email [info@portauthoritymdc.ms.it](mailto:info@portauthoritymdc.ms.it)

[www.portofcarrara.it](http://www.portofcarrara.it)



**MARINA DI CARRARA**

⊕ 44°01'·62N 10°02'·61E WGS84

**Facilities**

*Services* Water and electricity at or near most berths. For potable water use the tap near the entrance to the harbour compound. Showers and toilets at the clubhouse.

*Fuel* On the quay nearby.

*Repairs* Cranes up to 150 tons. Larger yachts can be hauled on a slip in the N corner. Good repair facilities at the harbour. Mechanical and engineering repairs. Electrical and electronic repairs. GRP and wood repairs. Sailmakers. Chandlers.

*Provisions* Good shopping for provisions in the town nearby.

*Eating out* Restaurants and pizzerias near the harbour, others in the town.

*Other* PO. Bank. ATM. Italgaz and Camping Gaz.

**General**

The harbour is used for the shipment of the Carrara white marble mined in the hinterland. Michelangelo favoured Carrara marble and it is still much in demand. In his day chisels and wooden wedges were used to prise out the marble whereas today dynamite splits the rock along natural fissures. The marble industry is much in evidence around Carrara, everything from tombstones and statues to chess sets and ashtrays in the souvenir shops are made of marble.

The town itself is a pleasing low-key resort with some elegant old buildings lining the grid-like

## PIOMBINO

BA 131  
Italian 71

### Approach

Straightforward.

*Conspicuous* The numerous high chimneys in the vicinity of the harbour make identification easy. The constant coming and going of ferries to Elba also make the port and the entrance easy to find.

*By night* Use the light on La Rochetta Fl(3)15s18m11M.

VHF Ch 14, 16 for port authorities. Ch 12 for pilots.

*Caution* Care must be taken of the ferries to Elba which have right of way in the approaches and the harbour itself.

### Mooring

*Berth* Go stern-to or alongside in the SW basin of the harbour. The bottom is mud and good holding.

*Shelter* Good although strong NE winds send in a swell. Wash from the constant coming and going of the ferries.

*Authorities* Harbourmaster and customs.

*Note* Yachts are not normally welcome in the harbour and it should only be used in extremis.

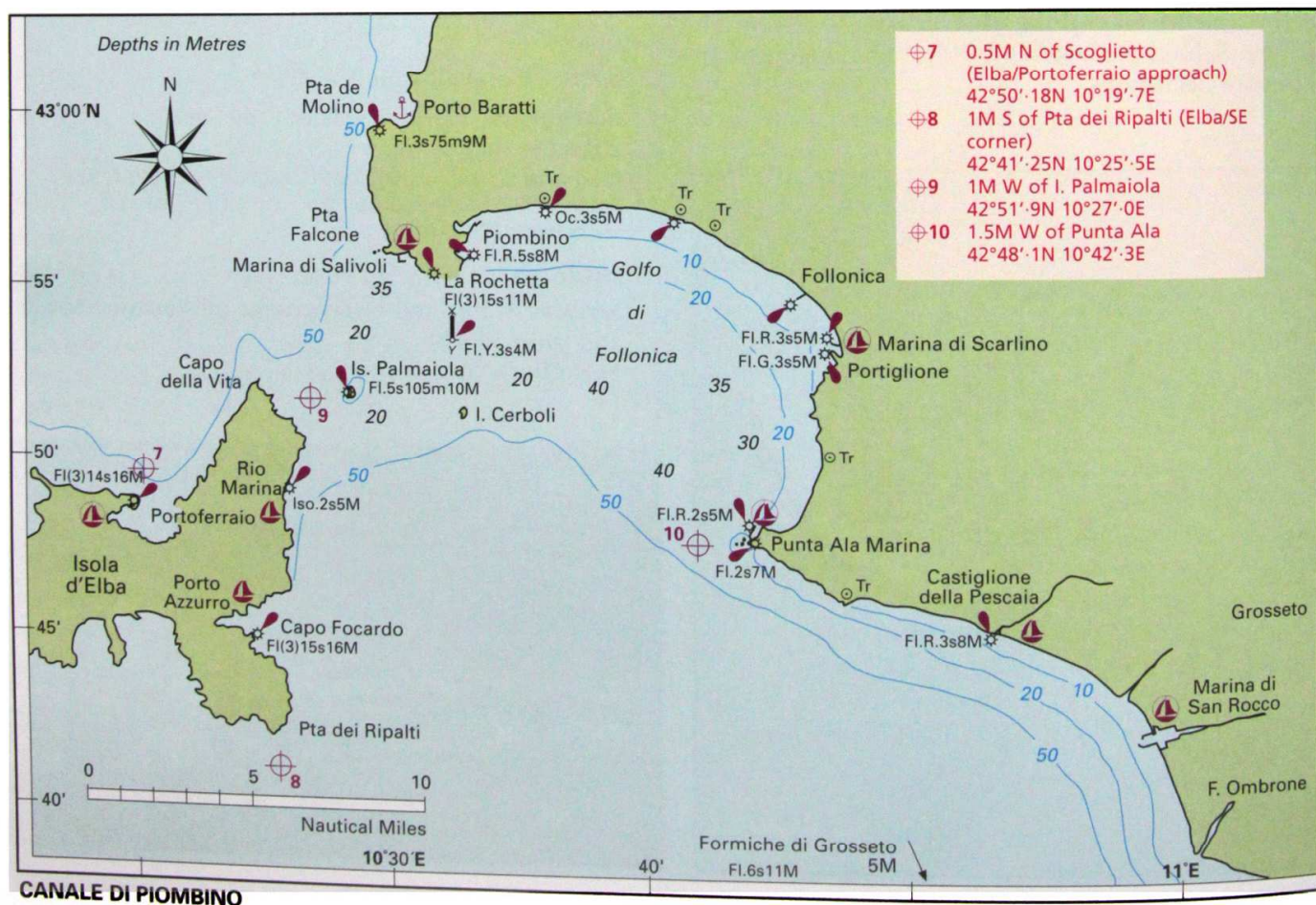
### Facilities

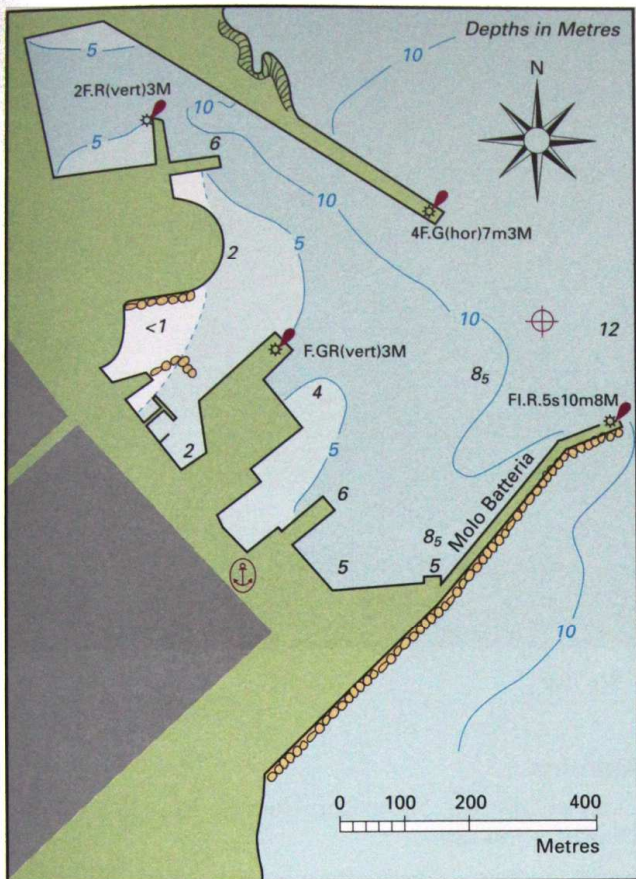
*Water* On the quay.

*Other* Taxis to the town. Ferries to Elba.



Piombino looking east





**PIOMBINO**  
 Ⓢ42°55'·9N 10°33'·1E

**General**

Piombino is a useful harbour in an emergency, but the surroundings can only be described as industrial and if the wind is in the wrong direction you get the smell of the oil refinery up your nose to go with the industrial landscape.

**Golfo di Follonica**

From Piombino the coast trends in a wide curve to Punta Ala about 11 miles to the SE. The shores of the gulf are low and marshy and there are numerous chimneys and industrial plants in the northern half of the gulf.

Care is needed when passing through the strait between Elba and Piombino and into the gulf. It is always busy with commercial ships, either on passage or at anchor in the roads, and ferries plying between the islands and the mainland.

**MARINA DI SCARLINO**

A marina on the S side of the entrance to Portiglione Canal.

**Approach**

Marina di Scarlino lies in the E corner of Golfo di Follonica, some 11M E from the Canale di Piombino. The coast around the gulf is low-lying, and the chimneys of industrial plants are easy to see against the shore. The N shore of the gulf is shallow,

with depths under 20m nearly 2M off the coast in places. With onshore winds the sea heaps up over here, and care is needed in the final approaches to the marina.

*Conspicuous* The control tower, a sandstone brick tower with a hexagonal roof and reflective glass, is easily identified.

*By night* Shoal water off the entrance to the Portiglione canal is marked with red buoys (lit Fl.R.5s), and the marina entrance is lit, but a night entry, particularly with strong onshore winds, is not recommended.

VHF Ch 72.

*Dangers* The area around the mouth of the Portiglione canal and the marina entrance appears to be liable to silting, particularly after winter storms, although the marina entrance is dredged and buoyed. Deep-draught yachts should call ahead for advice if in any doubt. With strong onshore winds care is needed when entering the marina, but it is more difficult than dangerous.

**Mooring**

*Data* 950 berths. Visitors' berths. Max LOA 40m.

*Berth* Marina staff will direct you to a berth. Finger pontoons, and laid moorings tailed to the quay for larger yachts (>12m).

*Shelter* Good all-round protection inside the marina.

*Authorities* Marina staff. Charge band 6.

✉ Marina di Scarlino, Localita Puntone 58020, Scarlino

☎ 0566 866 302 Fax 0566 866 252

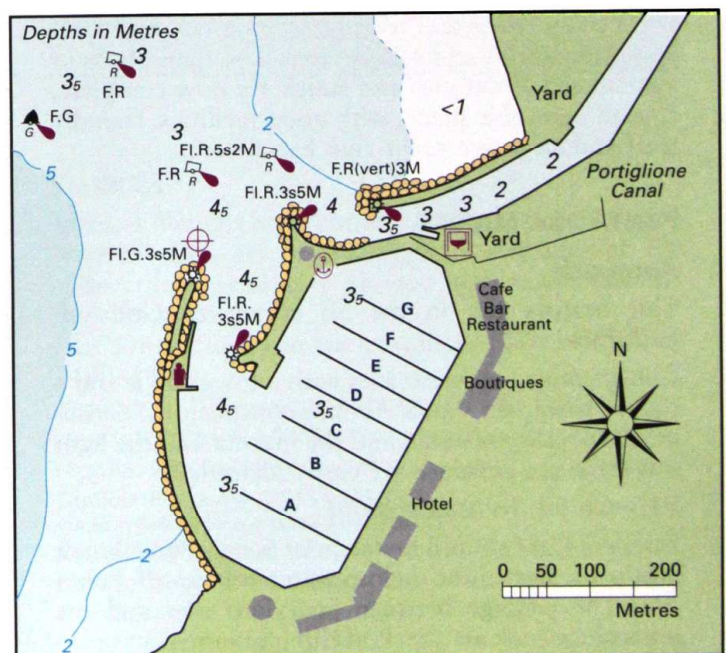
Email info@lamarinadiscarlino.it

www.lamarinadiscarlino.it

**Facilities**

*Services* Water and electricity (220/380V) at all berths. Showers and toilets.

*Fuel* Fuel on the quay (0800–1200 and 1500–1900).



**MARINA DI SCARLINO**  
 Ⓢ42°53'·23N 10°46'·84E WGS84

II. THE TUSCAN ISLANDS AND ADJACENT MAINLAND COAST



Marina di Scarlino and the entrance to Portiglione canal *Marina di Scarlino*

*Repairs* Yacht Service (part of the Nautor Group) operate in the yard along the S side of the canal. 100-ton travel-lift. 30-ton crane. 40-ton hydraulic trailer. Repair facilities including carpentry, mechanical, electrical and electronics. Steel and GRP repairs. Painting facilities. Chandlers. B&G and Simrad dealers.

LAMDS Yacht Services ☎ 0566 867 031 Fax 0566 867 047  
Email info@lamdsyachtservice.it

*Provisions* Shops under construction in the marina. Bakery and minimarket in the village 200m away.

*Eating out* Hotel restaurant in the marina. More planned. Other restaurants nearby.

### General

This marina is now well established, with charter fleets based here and a growing number of yachts wintering afloat and ashore here. The final phase of apartments, boutiques and shops are now complete. It is an agreeable place, with good facilities, friendly staff and an active yacht club based here.

### PUNTA ALA MARINA

#### Approach

This marina lies in the SE corner of Golfo di Follonica.

*Conspicuous* Sparviero islet with a tower on it and a square tower on Punta Ala are conspicuous. Closer in, the development around the marina and the light towers at the entrance are easily identified.

VHF Ch 09, 16 (0830–2000).

*Dangers* Care should be taken of Scogli Porcellini, a group of above and below-water rocks, off Punta Ala. The passage between Sparviero islet and the outermost rock of the Porcellini group is straight-forward by day with depths of 12m in the fairway. The passage should not be attempted at night.

### Mooring

*Data* 895 berths. 90 visitors' berths. Max LOA 28m. Depths 1.8m–4m.

*Berth* Go stern or bows-to where directed. There are laid moorings tailed to the quay and you will be assisted to berth. Visitors' berths usually on the two pontoons near the entrance.

*Shelter* Excellent.

*Authorities* Harbourmaster and marina staff. Charge band 6+.

Punta Ala Marina Control Tower ☎ 0564 922 784  
Office ☎ 0564 922 217 / 785 Fax 0564 921 086 / 923 212  
Email info@marinadipuntala.com  
www.marinadipuntala.com



Scogli Porcellini off Punta Ala marina looking east